

Sewing & Stitchery e.x.p.o

Online Sales Begin
January 8, 2020

**FRIDAY
NIGHT
LIVE!**



Couture Designer
**Kenneth
D. King**

Quilt Artist
**Kimberly
Einmo**
presented by
JANOME



Quilter's
NIGHT OUT

Tickets and Show Information

www.sewexpo.com or 866-554-8559

Feb. 27 - March 1, 2020

Advanced classes begin Feb. 26. Vendor floor opens Feb. 27.

Washington State Fair & Event Center
Puyallup, Washington



FRIDAY NIGHT LIVE!

Kenneth D. King
Haute Couture Designer

Fri. Feb. 28

\$25

6:30 pm

Greatest Hits! The work of New York-based couture designer Kenneth D. King has appeared in music videos, television commercials, and on the red carpet for the Oscars. Now, join him as he shares a retrospective from his early days as a designer through the present day. Along the way, he'll share anecdotes of working with the rich and famous, and answer questions about working in the world of high fashion.

King is the creator of the *Smart Tailoring with Kenneth D. King* and *Smart Sewing with Fake Fur* DVD series with Threads Magazine. He has recently released a new book on fitting, tentatively titled *How to Read a Wrinkle* (available from The Taunton Press). He has taught across North America, in Europe, and in Asia, and is an adjunct professor in the Haute Couture program at the Fashion Institute of Technology in New York.

THE **VIP**
Experience

\$100

Begin your night as our guest!

Attend a private reception where you'll meet the nights' featured speaker, mingle with fellow VIPs, enjoy refreshments and an exclusive swag bag, plus your admission to the event is included with VIP seating for the show. Tickets are \$100 for each night. **Quantities are limited.**

Sat. Feb. 29

\$25

6:30 pm

JANOME
presents

Kimberly Einmo

Author, Quilter & Fabric Designer

My quilting journey (and other creative detours.)

In this lighthearted, inspiring, and thoroughly engaging presentation, Kimberly will share her quilting journey through humorous stories, and her quilts through a fun and informative presentation and trunk show. Learn about her creative process and how to find your own design inspiration in unexpected places!

Stunning quilts can come from simple shapes and Kimberly is the master of combining clever fabric placement and basic blocks to create original, dynamic, and eye-catching designs. You'll leave feeling inspired and uplifted with a fresh perspective and new confidence for your own quilting journey!

Kimberly is proud to be the National Spokesperson for Janome - America, an author, award-winning quilter, fabric designer, international instructor, quilt judge, and host of five popular classes on CRAFTSY/Blueprint. As a respected and prominent leader in the quilting industry, Kimberly enjoys meeting quilters, crafters and sewing enthusiasts from all walks of life across the U.S. and around the world!



Quilter's
NIGHT OUT



NEW

New for 2020 **Youth Sew**

Beginners are welcome in most Sew Expo classes, but classes featuring the **Youth Sew** button icon (👧) are specially designated as appropriate for youth (and less experienced makers). Teachers do ask that children attending machine-sewing classes are familiar with sewing machines.



New for 2020 **Scout's Honor**

Sunday, March 1 • Free*

Girl Scouts, Boy Scouts, and 4-H members can get free* gate admission on Sunday, March 1. Contact your troop leaders or local office after January 8, 2020. Children 10 and younger are always admitted free to Expo.

**Class fees apply.*

Get the
App



Attend to Win!

Door Prize Drawings Every Day of Expo



Provided by Quality Sewing & Vacuum

Brother Innov-is NQ3600D
Retail Value \$4,999*

Viking Brilliance™ 75Q
Retail Value \$3,499*

Pfaff Expression™ 710
Retail Value \$2,799*

Brother Innov-is BQ1350
Retail Value \$2,699*

Provided by Unique Sewing Furniture

Model 390 Ironing Station
Retail Value \$1,499*

Provided by Janome & City Vacuum & Sewing

Elna lotus 2
Retail Value \$999*

Elna eXperience 560
Retail Value \$999*

Janome DC2031
Retail Value \$999*

Janome Skyline S3
Retail Value \$999*

Additional door prizes provided by Bernina & Sewing Machine Service.

Need not be present to win. To enter the daily drawing, submit your hand-filled entry at the door prize booth (Pavilion south entrance) during regular show hours. Winners will be notified by phone following each day's drawing. *Manufacturer suggested retail price. Prizes are not redeemable for cash. Any additional costs including, but not limited to, transportation of prize to winner's home and any taxes resulting from claiming this prize are the sole responsibility of the prize winner.

EXP O Charity PARTNERS



The Sewing & Stitchery Expo is partnering with Sew Powerful to keep girls in school!

Sew Powerful combats extreme poverty in Lusaka, Zambia, by creating jobs and providing training and tools to create Purposeful Products, including school uniforms, reusable feminine hygiene pads, soap, and food. *Sew Powerful* asks sewists to make the *Sew Powerful* purse, which is used to deliver feminine hygiene supplies to Zambian girls. When the girls receive their purse, they take the *Sew Powerful* pledge and promise to come to school all month long. Purses keep girls in school!

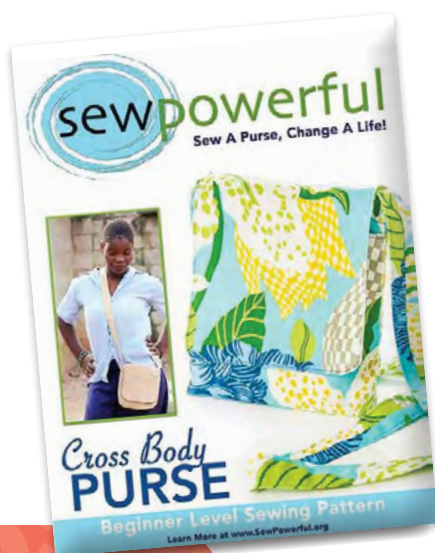
Two Ways to Participate

Before Expo. Make a purse* and bring it with you to Expo! Get the free pattern on the Sew Powerful website, and learn more about this powerful program.

At Expo. Sit down in the Charity Sew area in the Showplex to create your purse on-site!

*Please note, use of this FREE pattern is required.

<http://bit.ly/sewpowerful>



Step By Step
TRANSFORMING LIVES, ONE STEP AT A TIME

Motherhood is hard, and every mom deserves to have a community supporting her. We're here to help make sure *all* moms have something handmade, no matter what.

Step By Step helps at-risk pregnant women to deliver a healthy baby, embrace positive parenting, and establish safe homes and secure futures. For over 20 years, *Step By Step* has paired mothers with licensed nurses, counselors, and dietitians to address the unique challenges faced by at-risk mothers and their families. When essential items like diapers, wipes, blankets, and baby clothes are delivered in handmade reusable tote bags, it reminds moms that someone cares and took the time to make her something beautiful. This thoughtful gift helps her know that she is not alone and that she has a family supporting her—every step of the way.

How to Participate

Before Expo. Make a tote bag & bring it with you to Expo! If you want to do more, Step By Step always needs non-perishable baby items, like diapers & wipes, as well as gift cards to local stores that sell those items. Feel free to use this pattern, or sew your favorite tote!

<http://bit.ly/stepbysteptote>

At Expo. Sew a tote bag on site at Expo, with help from our volunteers!



For more information or to register **866-554-8559** or www.sewexpo.com

One Needle Classes

45 minutes

\$6*

*\$8 at Expo



1001 Westalee Ruler Foot Quilting with Templates

Amelia Beiderwell • Quality Sewing & Vacuum

FRI (#1001B) 12:30 - 1:15 PM
SHOWPLEX, ROOM C

SUN (#1001D) 2:30 - 3:15 PM
SHOWPLEX, ROOM D



Learn tools and techniques of machine quilting with Westalee Design Ruler Foot and Quilting Templates on home sewing machines. Dive deeper into the Sew Steady and Westalee product lines with education on the newest must-have template designs. Get in the know about all the education opportunities available to you!

1002 Garment Sewing Solution: Fit the Pattern First

Dana Bontrager • Dana Marie Designs

THU (#1002A) 3:30 - 4:15 PM
SAT (#1002C) 12:30 - 1:15 PM
SHOWPLEX, ROOM D

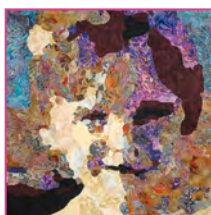


If your paper pattern is not properly measured and adjusted, you are just setting yourself up for aggravation. Wouldn't it be great to open a pattern, cut, sew, and have it fit perfectly? Dana will help you understand why trusting pattern measurements, descriptions, and sizing does not always work. Learn how to begin with an accurate blueprint so your project gets off to a successful start.

1003 How to Sew Art

Tammie Bowser • Mosaic Quilt Studio

FRI (#1003B) 9:30 - 10:15 AM
SUN (#1003D) 12:30 - 1:15 PM
SHOWPLEX, ROOM E



Ever dream of being an artist? Learn a simple, step-by-step creative process to transform ordinary fabrics from your stash into fine art! Learn how to make fabric look like paint and how to use thread like a paint brush. Even beginners can sew perfect quilted art!

1004 Sewing Machine, Needles & Threads: What You Really Need to Know

Steve Butler • Clover Needlecraft

FRI (#1004B) 3:30 - 4:15 PM
SHOWPLEX, ROOM C

SUN (#1004D) 1:30 - 2:15 PM
SHOWPLEX, ROOM E



Sewing machines have amazing capabilities, machine needles exist for every conceivable application, and threads are over-the-top in form and function. But how do you make them all work together? This class tackles all three. As always, questions are encouraged.

1005 Tool School — Necessary Notions

Steve Butler • Clover Needlecraft

THU (#1005A) 11:30 AM - 12:15 PM
SAT (#1005C) 10:30 - 11:15 AM
SHOWPLEX, ROOM C

FRI (#1005B) 9:30 - 10:15 AM
PAVILION, EXPO RUNWAY



See the latest sewing and craft Clover notions and tools Steve has in his creative tool box, and learn how to use them to achieve your creative aspirations. And don't miss seeing the latest "Gotta have it" tools. You may just find the one thing you've been waiting for to bring your creative vision to life!

One Needle Classes THURSDAY

	Showplex Room D	Showplex Room E	Showplex Room G	Pavilion Expo Runway	Showplex Free Stage
8:30 TO 9:15	1016 Grab and Go Notions: Best of the BEST! <i>Geri Graskvik</i>	1043 Capsule Wardrobe Color-Mapping <i>Nancy Nix-Rice</i>	1060 How to Fit a Dress Form to Your Body Shape <i>Joe Vecchiarelli</i>	1066 Tips & Techniques for Sewing Athleisure Wear <i>Angela Wolf</i>	
9:30 TO 10:15	1051 Serger 911 <i>Kathy Ruddy</i>	1020 Once I Have My Measurements, How Do I Use Them Effectively? <i>Lorraine Henry</i>	1041 Thread Choice for Embroidery: Making Your Embroidery Pop <i>Andrew Ngai</i>	1036 Stash Builders Showcase: You've Got It – Flaunt It <i>Marti Michell</i>	Accuquilt Quality Sewing & Vacuum Instructor
10:30 TO 11:15	1011 Fun Effects Embroidery <i>John Deer</i>	1028 What Happened to My Waist? Waistband Alternatives <i>Susan Lazear</i>	1025 Make Your Own Texture-Worthy Fabric <i>Cheryl Kuczek</i>	1013 Thread Therapy with Superior Threads <i>Amy Domke</i>	Pattern Preservation: Trace Like a Boss <i>Keli Faw</i>
11:30 TO 12:15	1064 How to Embroider on Sheer Fabrics – AKA Removable Tattoos <i>Angela Wolf</i>	1035 Getting Comfortable and Creative with Cotton and Cuddle <i>Sheila McKay</i>	1005 Tool School – Necessary Notions <i>Steve Butler</i>		Sewing Tools for Comfortable Clothes <i>Kathy Ruddy</i>
12:30 TO 1:15	1032 Oddly Easy Quilt Borders <i>Julie Luoma</i>	1017 Cool Featherweight Gadgets & Gizmos <i>Lois Hallock</i>	1027 Fit Preferences: Understanding How You Like Your Clothes to Fit <i>Susan Lazear</i>	1021 How To Use Social Media to Improve Your Sewing <i>Lindsey Johns</i>	ByAnnie Bag Making Basics <i>Annie Unrein</i>
1:30 TO 2:15	1053 In The Hoop Embroidery Projects <i>Lisa Shaw</i>	1012 Quilting Made Easy with Machine Embroidery <i>John Deer</i>	1008 Cutting to the Chase of Great Garments! <i>Louise Cutting</i>	1006 Fitting the Body, Mind, and Spirit <i>Rae Cumbie</i>	What Kind of Embroidery Software Do I Need? <i>Floriani Certified Educator</i>
2:30 TO 3:15	1024 The Art of Online Fabric Printing <i>Stephanie Kleinman</i>	1040 Style Me Vintage <i>Laura Nash</i>	1048 Reuse, Recycle, Embellish & Accessorize <i>Cindy Rowell</i>	1007 Knit Fit Nuances <i>Rae Cumbie</i>	Create Enchanting Fabric with Washable Tsukineko Inks <i>Joyce Teng</i>
3:30 TO 4:15	1002 Garment Sewing Solution: Fit the Pattern First <i>Dana Bontrager</i>	1022 Making a Princess Pattern... That FITS <i>Judy Kessinger</i>	1015 Introduction to Singer Featherweights <i>Darlene Girtton</i>	1019 Covering “Busty” Topics for a Better Fit <i>Lorraine Henry</i>	Fun with Decorative Stitches – Start Using Them Again! <i>Kandi Christian</i>
4:30 TO 5:15		1030 Shirt Hacking – Creating Fashion-Forward Tops from Men's Shirts <i>Pamela Leggett</i>	1023 The Art of Inkjet Printing <i>Stephanie Kleinman</i>	1033 Fast, Easy Projects to Finish in Less Than 1 Hour! <i>Linda McGehee</i>	

One Needle Classes FRIDAY

Showplex Room D	Showplex Room E	Showplex Room G	Pavilion Expo Runway	Showplex Free Stage	
1016 Grab and Go Notions: Best of the BEST! <i>Geri Grasvik</i>	1062 Notions for Fashion <i>Joe Vecchiarelli</i>	1044 Pro Pointers for Ponte Knit <i>Nancy Nix-Rice</i>	1063 Old Wives Tales, Common Knowledge and Other Lies We Tell New Quilters <i>Mech Watne</i>		8:30 TO 9:15
1052 Embroidery 101 <i>Lisa Shaw</i>	1003 How to Sew Art <i>Tammie Bowser</i>	1055 Sewing Fashionable Upcycled Clothing <i>Susan Skalak</i>	1005 Tool School – Necessary Notions <i>Steve Butler</i>	Fashion Forward Quilted Jackets <i>Rae Cumbie</i>	9:30 TO 10:15
1042 Threaducation 101 <i>Andrew Ngai</i>	1057 Design Modern Scrappy Quilts Using Color Value <i>Blair Stocker</i>	1027 Fit Preferences: Understanding How You Like Your Clothes to Fit <i>Susan Lazear</i>	1038 Diamonds are a Quilter's Best Friend <i>Krista Moser</i>	Design & Style Your Contemporary Kimono <i>Annette Millard</i>	10:30 TO 11:15
1029 One Yard Wonders – Create and Enhance Your Wardrobe with just a Yard! <i>Pamela Leggett</i>	1037 Simple Skills for Professional Results <i>Sandra Miller</i>	1065 Sewing and Fitting Jacket Sleeves <i>Angela Wolf</i>	1039 Harmony in Design, Dress & Body Type <i>Laura Nash</i>		11:30 TO 12:15
1059 Beautiful Bindings <i>Annie Unrein</i>	1018 Ergonomics for Quilters and Crafters <i>Lois Hallock</i>	1001 Westalee Ruler Foot Quilting with Templates <i>Amelia Beiderwell</i>	1014 All About Knits <i>Chey Ferris</i>	Perfect Quilting Results Are NO Accident <i>Floriani Certified Educator</i>	12:30 TO 1:15
1050 Easy Tops That Fit <i>Kathy Ruddy</i>	1013 Thread Therapy with Superior Threads <i>Amy Domke</i>	1054 Vintage Threads with Machines <i>Lisa Shaw</i>	1046 Uzbek Ikat: The Personal Saga of an Exceptional Cloth <i>Marilyn Romatka</i>	Create Enchanting Fabric with Washable Tsukineko Inks <i>Joyce Teng</i>	1:30 TO 2:15
1056 Project Speed: Taking Advantage of a 10 Degree Ruler <i>Connie Spurlock</i>	1047 Quick Gifts From Your Fabric Scraps <i>Cindy Rowell</i>	1010 Embroidery Basic Essentials <i>John Deer</i>	1045 What Needle Should I Use? <i>Rhonda Pierce</i>		2:30 TO 3:15
1026 Awakening Your Design Eye <i>Marlis Kuusela</i>	1034 Putting in a Zip! <i>Linda McGehee</i>	1004 Sewing Machine, Needles & Threads: What You Really Need to Know <i>Steve Butler</i>	1036 Stash Builders Showcase: You've Got It – Flaunt It <i>Marti Michell</i>	Recycle, Repurpose and Create New 18" Doll Clothes <i>Nadeen Ward</i>	3:30 TO 4:15
1009 Isn't It Fitting? <i>Louise Cutting</i>	1031 My 10 Favorite Rulers for Quilt Projects <i>Julie Luoma</i>	1067 Which Hem Should You Choose? <i>Angela Wolf</i>		Quick Gifts from Your Scraps <i>Cindy Rowell</i>	4:30 TO 5:15

One Needle Classes SATURDAY

	Showplex Room D	Showplex Room E	Showplex Room G	Pavilion Expo Runway	Showplex Free Stage
8:30 TO 9:15	1030 Shirt Hacking— Creating Fashion-Forward Tops from Men's Shirts <i>Pamela Leggett</i>	1043 Capsule Wardrobe Color-Mapping <i>Nancy Nix-Rice</i>	1060 How to Fit a Dress Form to Your Body Shape <i>Joe Vecchiarelli</i>	2029 Shark Tank's Mr. Wonderful says "I need to make money!" Are you? <i>Connie Spurlock</i> SEE PAGE 19.	Accuquilt Quality Sewing & Vacuum Instructor
9:30 TO 10:15	1052 Embroidery 101 <i>Lisa Shaw</i>	1028 What Happened to My Waist? Waistband Alternatives <i>Susan Lazear</i>	1020 Once I Have My Measurements, How Do I Use Them Effectively? <i>Lorraine Henry</i>		Creating a Stable Environment for YOUR Embroidery <i>Floriani Certified Educator</i>
10:30 TO 11:15	1053 In The Hoop Embroidery Projects <i>Lisa Shaw</i>	1013 Thread Therapy with Superior Threads <i>Amy Domke</i>	1005 Tool School— Necessary Notions <i>Steve Butler</i>	1035 Getting Comfortable and Creative with Cotton and Cuddle <i>Sheila McKay</i>	ByAnnie Bag Making Basics <i>Annie Unrein</i>
11:30 TO 12:15	1008 Cutting to the Chase of Great Garments! <i>Louise Cutting</i>	1006 Fitting the Body, Mind, and Spirit <i>Rae Cumbe</i>	1025 Make Your Own Texture-Worthy Fabric <i>Cheryl Kuczek</i>		ASG Fashion Show <i>Katrina Walker</i>
12:30 TO 1:15	1002 Garment Sewing Solution: Fit the Pattern First <i>Dana Bontrager</i>	1064 How to Embroider on Sheer Fabrics— AKA Removable Tattoos <i>Angela Wolf</i>	1061 I've Padded My Dress Form, Now What? <i>Joe Vecchiarelli</i>	 4-H Fashion Revue	
1:30 TO 2:15	1024 The Art of Online Fabric Printing <i>Stephanie Kleinman</i>	1021 How To Use Social Media to Improve Your Sewing <i>Lindsey Johns</i>	1051 Serger 911 <i>Kathy Ruddy</i>		Sew Read! <i>Michele Drovdahl</i>
2:30 TO 3:15	1058 Fabric Mania: 10 Ways to Craft Custom Fabric <i>Joyce Teng</i>	1022 Making a Princess Pattern... That FITS <i>Judy Kessinger</i>	1011 Fun Effects Embroidery <i>John Deer</i>	2001 Sewing Machines 101: This Stupid Machine Is Doing It Again! <i>Darrelle Anderson</i> SEE PAGE 14.	Fun with Decorative Stitches—Start Using Them Again! <i>Kandi Christian</i>
3:30 TO 4:15	1066 Tips & Techniques for Sewing Athleisure Wear <i>Angela Wolf</i>	1048 Reuse, Recycle, Embellish & Accessorize <i>Cindy Rowell</i>	1040 Style Me Vintage <i>Laura Nash</i>		Sewing Tools for Comfortable Clothes <i>Kathy Ruddy</i>
4:30 TO 5:15	1032 Oddly Easy Quilt Borders <i>Julie Luoma</i>	1017 Cool Featherweight Gadgets & Gizmos <i>Lois Hallock</i>	1012 Quilting Made Easy with Machine Embroidery <i>John Deer</i>		Pattern Preservation: Trace Like a Boss <i>Keli Faw</i>

One Needle Classes SUNDAY

Showplex Room D	Showplex Room E	Showplex Room G	Pavilion Expo Runway	Showplex Free Stage	
1016 Grab and Go Notions: Best of the BEST! <i>Geri Grasvik</i>	1062 Notions for Fashion <i>Joe Vecchiarelli</i>	1044 Pro Pointers for Ponte Knit <i>Nancy Nix-Rice</i>		Wow! Wearable Art Jackets <i>Rae Cumbie</i>	8:30 TO 9:15
1056 Project Speed: Taking Advantage of a 10 Degree Ruler <i>Connie Spurlock</i>	1057 Design Modern Scrappy Quilts Using Color Value <i>Blair Stocker</i>	1041 Thread Choice for Embroidery: Making Your Embroidery Pop <i>Andrew Ngai</i>			9:30 TO 10:15
1055 Sewing Fashionable Upcycled Clothing <i>Susan Skalak</i>	1049 Easy Bottoms That Fit <i>Kathy Ruddy</i>	1042 Threaducation 101 <i>Andrew Ngai</i>	1039 Harmony in Design, Dress & Body Type <i>Laura Nash</i>	Design & Style Your Contemporary Kimono <i>Annette Millard</i>	10:30 TO 11:15
1059 Beautiful Bindings <i>Annie Unrein</i>	1063 Old Wives Tales, Common Knowledge and Other Lies We Tell New Quilters <i>Mech Watne</i>	1019 Covering "Busty" Topics for a Better Fit <i>Lorraine Henry</i>	1033 Fast, Easy Projects to Finish in Less Than 1 Hour! <i>Linda McGehee</i>	Recycle, Repurpose and Create New 18" Doll Clothes <i>Nadeen Ward</i>	11:30 TO 12:15
1026 Awakening Your Design Eye <i>Marlis Kuusela</i>	1003 How to Sew Art <i>Tammie Bowser</i>	1029 One Yard Wonders – Create and Enhance Your Wardrobe with just a Yard! <i>Pamela Leggett</i>	1014 All About Knits <i>Chey Ferris</i>	Secrets to Look Slimmer <i>Kathy Ruddy</i>	12:30 TO 1:15
1009 Isn't It Fitting? <i>Louise Cutting</i>	1004 Sewing Machine, Needles & Threads: What You Really Need to Know <i>Steve Butler</i>	1034 Putting in a Zip! <i>Linda McGehee</i>	1045 What Needle Should I Use? <i>Rhonda Pierce</i>		1:30 TO 2:15
1001 Westalee Ruler Foot Quilting with Templates <i>Amelia Beiderwell</i>	1010 Embroidery Basic Essentials <i>John Deer</i>	1031 My 10 Favorite Rulers for Quilt Projects <i>Julie Luoma</i>	1037 Simple Skills for Professional Results <i>Sandra Miller</i>		2:30 TO 3:15

1006 Fitting the Body, Mind, and Spirit

Rae Cumbie • *Fit for Art Patterns*

THU (#1006A) 1:30 - 2:15 PM
PAVILION, EXPO RUNWAY

SAT (#1006C) 11:30 AM - 12:15 PM
SHOWPLEX, ROOM E

A comfortable and flattering fit is more than the numbers on your tape measure. Join *Sew News* "Curve Appeal" fit columnist Rae Cumbie for a discussion and trunk show of the journey toward a satisfying personalized fit. As a sewist you can mindfully find your best fit when you honor your body's curves, fitting preferences and your fabric choices. Get started creating an empowering wardrobe.



1007 Knit Fit Nuances

Rae Cumbie • *Fit for Art Patterns*

THU (#1007A) 2:30 - 3:15 PM
PAVILION, EXPO RUNWAY

Are your fashion knit creations effortless to wear, or do they stretch awkwardly in some places and ride up in others? Learn several fitting tricks that will make your knits look and feel comfortable every day. Consider how each variety of knit fabric stretches and how it affects the fit of your knit. Plan to shape up your knits for an easy and comfortable appearance.



1008 Cutting to the Chase of Great Garments!

Louise Cutting • *Cutting Line Designs*

THU (#1008A) 1:30 - 2:15 PM
SHOWPLEX, ROOM C

SAT (#1008C) 11:30 AM - 12:15 PM
SHOWPLEX, ROOM D

There are so many ways to make garment sewing look more professional. From using the correct size to button placement, interfacing choice, mitered corners, and more. Louise will teach you all about how to make your garments fit you.



1009 Isn't It Fitting?

Louise Cutting • *Cutting Line Designs*

FRI (#1009B) 4:30 - 5:15 PM
SUN (#1009D) 1:30 - 2:15 PM
SHOWPLEX, ROOM D

Have you stopped sewing clothes because of fitting issues? Louise will show you what to do about the most common issues, including forward shoulders, rounded upper back, blending sizes, scaling pattern sizes, fitting arms, and more. See the solutions, all done with measurements and the patterns... plus pants! Don't be afraid to cut past the big black line.



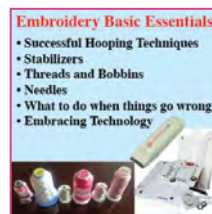
1010 Embroidery Basic Essentials

John Deer • *John Deer's Embroidery Legacy*

FRI (#1010B) 2:30 - 3:15 PM
SHOWPLEX, ROOM G

SUN (#1010D) 2:30 - 3:15 PM
SHOWPLEX, ROOM E

No matter what machine brand you own, the end result should be beautiful stitches creating soft embroidery! Getting consistent results begins with a firm grasp of the basics. We'll explore hooping basics, choosing the right stabilizer, and selecting appropriate needles and thread. Bonus: We'll cover choosing the right design and customizing it for your fabric.



1011 Fun Effects Embroidery

John Deer • *John Deer's Embroidery Legacy*

THU (#1011A) 10:30 - 11:15 AM
SHOWPLEX, ROOM D

SAT (#1011C) 2:30 - 3:15 PM
SHOWPLEX, ROOM G

This class is about the fun techniques you can create with embroidery. Explore the steps involved in creating different in-the-hoop projects, appliqué, reverse appliqué and cutwork, fringe embroidery, 3D embroidery, free-standing lace and much, much more! You will have access to tutorials and embroidery files for all the techniques shown, so you can play when you get home!



1012 Quilting Made Easy with Machine Embroidery

John Deer • *John Deer's Embroidery Legacy*

THU (#1012A) 1:30 - 2:15 PM
SHOWPLEX, ROOM E

SAT (#1012C) 4:30 - 5:15 PM
SHOWPLEX, ROOM G

You know that saying "What will they think of next?" In regard to combining embroidery and quilting industry, innovator John Deer created Flexi-Quilt Elements. Creating quilting patterns for machine embroidery has never been so quick and easy! The future is now—you'll be in disbelief when you see the designs and samples created in this class.



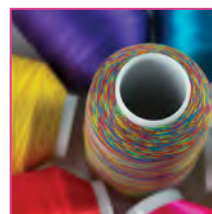
1013 Thread Therapy with Superior Threads

Amy Domke • *Superior Threads*

THU (#1013A) 10:30 - 11:15 AM
PAVILION, EXPO RUNWAY

FRI (#1013B) 1:30 - 2:15 PM
SAT (#1013C) 10:30 - 11:15 AM
SHOWPLEX, ROOM E

This class will help resolve frustrations with all types of threads and most of the problems you've experienced with them. You'll learn how to distinguish thread quality, know what to look for in your threads, fact and fiction regarding thread, pros and cons of major thread types, importance of needle selection, and proper tension settings for your sewing/quilting success.



1014 All About Knits

Chey Ferris • *So Sew English Fabrics*

FRI (#1014B) 12:30 - 1:15 PM
SUN (#1014D) 12:30 - 1:15 PM
PAVILION, EXPO RUNWAY

Take the mystery out of knit fabrics to create your own garments with ease! You'll learn about several popular types of knit fabrics, and you'll be able to see, feel, and manipulate each one. We'll cover the properties of knits, as well as the best types of garments made from each type of fabric.



1015 Introduction to Singer Featherweights

Darlene Girton • *Pop Up Booth*

THU (#1015A) 3:30 - 4:15 PM
SHOWPLEX, ROOM C

This informative talk will take you on a guided tour of the Singer Featherweight with the Featherweight Doctor. These vintage, simple, portable machines are wildly popular 86 years after they were first made. During this presentation, we'll discuss why these workhorses are in a renaissance.



1016 Grab and Go Notions: Best of the BEST!

Geri Grasvik • *Pine Needle Quilt Adventures*

THU (#1016A) 8:30 - 9:15 AM
FRI (#1016B) 8:30 - 9:15 AM
SUN (#1016D) 8:30 - 9:15 AM
SHOWPLEX, ROOM D

Do you love to go on retreats, or go to classes? Do you live on a boat or in a small space? Do you have a vacation home or travel? Geri can help make sure you're using the best notions for your lifestyle, whether you prefer to sew on the go or at home. Stay organized, save money, and get more done with Geri's tips.



1017 Cool Featherweight Gadgets & Gizmos

Lois Hallock • *Your Perfect Quilting Space/ Clearview Designs*

THU (#1017A) 12:30 - 1:15 PM
SAT (#1017C) 4:30 - 5:15 PM
SHOWPLEX, ROOM E

Featherweight sewing machines are beautiful and collectible, but are you using yours to its best potential? Learn about the latest tools and techniques for producing amazing quilts and keeping your machine in tip-top shape. The Featherweight will become your new favorite machine for retreats, classes, and sewing in your studio.



1018 Ergonomics for Quilters and Crafters

Lois Hallock • *Your Perfect Quilting Space/ Clearview Designs*

FRI (#1018B) 12:30 - 1:15 PM
SHOWPLEX, ROOM E

Poor ergonomics may lead quilters to shorten their crafting sessions, or even keep them from starting in the first place. Lois will help quilters reduce their fatigue and improve studio ergonomics and storage for immediate results and more finished projects.



1019 Covering "Busty" Topics for a Better Fit

Lorraine Henry • *Lorraine Henry Enterprises/ Two Easy Tape Company*

THU (#1019A) 3:30 - 4:15 PM
PAVILION, EXPO RUNWAY
SUN (#1019D) 11:30 AM - 12:15 PM
SHOWPLEX, ROOM G

Learn the easiest and more accurate method for altering for any bust variation, whether large or small. We'll cover the basic two-dart bodice, princess seamlines, and empire waists. From buying the right size to measuring, standard cup size alterations, how and why to add a dart—we'll talk about it all! This is a "busty" class you shouldn't miss!

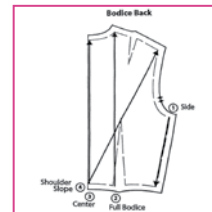


1020 Once I Have My Measurements, How Do I Use Them Effectively?

Lorraine Henry • *Lorraine Henry Enterprises/Two Easy Tape Company*

THU (#1020A) 9:30 - 10:15 AM
SHOWPLEX, ROOM E
SAT (#1020C) 9:30 - 10:15 AM
SHOWPLEX, ROOM G

Do you have fitting issues that need to be resolved? We'll start with the essential shoulder tip-to-tip measurement, then learn the revolutionizing order of comparing measurements one to another to show you exactly what changes are needed in your pattern. The "Length Before Width" rule will change your fitting world!



1021 How To Use Social Media to Improve Your Sewing

Lindsey Johns • *Pop Up Booth*

THU (#1021A) 12:30 - 1:15 PM
PAVILION, EXPO RUNWAY
SAT (#1021C) 1:30 - 2:15 PM
SHOWPLEX, ROOM E

Millions of people use social media to share their lives with others, and the sewing community is not immune. Learn how to harness the power of platforms like Instagram, Pinterest, and YouTube to improve your sewing, and to build a brand and gain followers for your business or creative activities.



1022 Making a Princess Pattern... That FITS

Judy Kessinger • *FitNice System*

THU (#1022A) 3:30 - 4:15 PM
SAT (#1022C) 2:30 - 3:15 PM
SHOWPLEX, ROOM E

Start with any basic top pattern that fits you and create a princess pattern. From there, create a top, jacket, coat or blouse, and learn about fabric selection based on what you plan to do with the garment. Whatever your choice, the princess line is the most flattering of all lines for any size or figure.



1023 The Art of Inkjet Printing

Stephanie Kleinman • *easyFab Design Studio/ Fabric Studio*

THU (#1023A) 4:30 - 5:15 PM
SHOWPLEX, ROOM C

Gather up your favorite photos and learn how to print them on different types of pretreated fabrics. Learn about your options with inkjet printers, photo editing, scanning and adjusting your photos for best results. Explore ways to use your photos in memory quilts, personalized pillows, silk scarves and more! Stephanie will also discuss how to care for your fabric after you've printed.



1024 The Art of Online Fabric Printing

Stephanie Kleinman • *easyFab Design Studio/ Fabric Studio*

THU (#1024A) 2:30 PM - 3:15 PM
SAT (#1024C) 1:30 - 2:15 PM
SHOWPLEX, ROOM D

Everyone has heard of online fabric printing, but most are afraid to try it. If you follow the guidelines and techniques we discuss in class, you'll see how simple it actually is. This truly fun class will take the mystique out of online printing and show you how to easily get beautiful results!



1025 Make Your Own Texture-Worthy Fabric

Cheryl Kuczek • *Paradiso Designs*

THU (#1025A) 10:30 - 11:15 AM
SAT (#1025C) 11:30 AM - 12:15 PM
SHOWPLEX, ROOM C

Creating your very own fabric using sustainable design means scrap busting and advancing toward zero waste habits. The results are spectacular as you reap the benefits of usable fabric art. Learn the important techniques and tips, and see how your new artwork can be used in accessories and clothing!

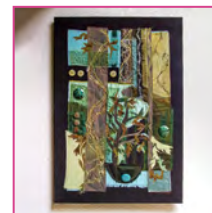


1026 Awakening Your Design Eye

Marlis Kuusela • *Flair Designs*

FRI (#1026B) 3:30 - 4:15 PM
SUN (#1026D) 12:30 - 1:15 PM
SHOWPLEX, ROOM D

Some people seem to instinctively know what they like in design; for others, the opposite is true. Marlis will guide both types to finding their own personal design eye. She will lead attendees in an art element analysis to help clarify what you like in design, which will make sewing projects, home design, and all artistic endeavors more satisfying.



1027 Fit Preferences: Understanding How You Like Your Clothes to Fit

Susan Lazear • *Cochennille Design Studio*

THU (#1027A) 12:30 - 1:15 PM
FRI (#1027B) 10:30 - 11:15 AM
SHOWPLEX, ROOM C

Learn techniques and measurements to understand how you like your clothing to fit. There is magic to the knowledge, as it will guide you to creating clothing you are comfortable in. No more surprises! Take home a mini worksheet to complete and use in future projects.



1028 What Happened to My Waist? Waistband Alternatives

Susan Lazear • *Cochennille Design Studio*

THU (#1028A) 10:30 - 11:15 AM
SAT (#1028C) 9:30 - 10:15 AM
SHOWPLEX, ROOM E

Has your waist changed? Don't give up on the skirts and pants you love. Instead, learn techniques for reworking your existing garments. With ideas gleaned from observing fashion and ready-to-wear, Susan Lazear will walk you through several techniques you can utilize to fit clothing to a greater range of bodies.



1029 One Yard Wonders - Create and Enhance Your Wardrobe with just a Yard!

Pamela Leggett • *Pamela's Patterns LLC & Palmer/Pletsch*

FRI (#1029B) 11:30 AM - 12:15 PM
SHOWPLEX, ROOM D
SUN (#1029D) 12:30 - 1:15 PM
SHOWPLEX, ROOM C

Is there just one yard of that beautiful fabric left on the bolt? Do you have a yard of fabric left from a project? Could you only afford a yard of a luxe fabric? Pamela will show you how many garments and accessories you can create with just 36 inches of fabric. You'll also get great tips on making garments fit, flatter, and look professional, and get a PDF of the presentation to take home.



1030 Shirt Hacking – Creating Fashion-Forward Tops from Men's Shirts

Pamela Leggett • Pamela's Patterns LLC & Palmer/Pletsch

THU (#1030A) 4:30 - 5:15 PM
SHOWPLEX, ROOM E

SAT (#1030C) 8:30 - 9:15 AM
SHOWPLEX, ROOM D



Go to any thrift store and you'll see dozens of men's shirts on the racks. They are often well-constructed, use nice fabric, carry brand names, have lots of buttons—and are inexpensive! They could be dress, flannel, or sports shirts. Learn how to take these "shirt finds" and turn them into a well-fitted and stylish top. Hide figure flaws and enhance the good stuff.

1031 My 10 Favorite Rulers for Quilt Projects

Julie Luoma • Off The Wall Quilt

FRI (#1031B) 4:30 - 5:15 PM
SHOWPLEX, ROOM E

SUN (#1031D) 2:30 - 3:15 PM
SHOWPLEX, ROOM C

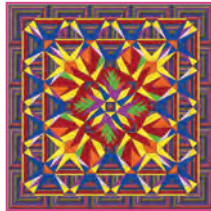


What's a quilter to do when she works in a quilt ruler business? She uses rulers, of course! Julie will share the eight rulers she uses the most and the two new ones she's developing. Come learn about easy ways to achieve accuracy and how to make your slippery rulers behave.

1032 Oddly Easy Quilt Borders

Julie Luoma • Off The Wall Quilt

THU (#1032A) 12:30 - 1:15 PM
SAT (#1032C) 4:30 - 5:15 PM
SHOWPLEX, ROOM D



This one is for those who never quite get the seams straight, who are always a bit shy of just enough fabric, and whose quilts never come out the expected size. We can make it all come together with some fun and easy border ideas. Bring a notepad and camera and we'll learn together!

1033 Fast, Easy Projects to Finish in Less Than 1 Hour!

Linda McGehee • BoNash

THU (#1033A) 4:30 - 5:15 PM
SUN (#1033D) 11:30 AM - 12:15 PM
PAVILION, EXPO RUNWAY



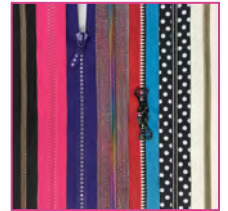
Where does the time go?! Do you want fast projects that look like they took hours? We'll venture into the world of quick & easy with some simple items that are useful for any age. Whether using the sewing machine, serger or embroidery machine, you'll find these projects fun and fast. You will be surprised what you can accomplish in an hour!

1034 Putting in a Zip!

Linda McGehee • BoNash

FRI (#1034B) 3:30 - 4:15 PM
SHOWPLEX, ROOM E

SUN (#1034D) 1:30 - 2:15 PM
SHOWPLEX, ROOM G



Zippers have evolved, and are used for utility or a garment focal point. They're easily installed in a variety of ways depending upon the project. Marvel at the ease of inserting zippers in garments, pockets, pillows & handbags. You'll learn five different zipper applications, how to "fix a zipper" to fit the length you need, and how to put a zipper back together. Insert zippers trouble free, the easy way.

1035 Getting Comfortable and Creative with Cotton and Cuddle

Sheila McKay • McKay Manor Musers

THU (#1035A) 11:30 AM - 12:15 PM
SHOWPLEX, ROOM E

SAT (#1035C) 10:30 - 11:15 AM
PAVILION, EXPO RUNWAY



Come learn tips and tricks to make it easier to sew with those soft Cuddle (Minky) fabrics. We'll share projects from stuffed animals to wearables, quilts, and bags.

1036 Stash Builders Showcase: You've Got It – Flaunt It

Marti Michell • Michell Marketing, Inc.

THU (#1036A) 9:30 - 10:15 AM
FRI (#1036B) 3:30 - 4:15 PM
PAVILION, EXPO RUNWAY



Why limit yourself to eight fabrics in a quilt when you can use 80? Celebrate your stash with multi-fabric quilts. Marti will share her ideas for making quilts that flash your stash. Enjoy the quilt trunk show and go home with a stash-busting idea booklet to jump-start your creative process. Bonus: Top 10 reasons you need more fabric!

1037 Simple Skills for Professional Results

Sandra Miller • Cutting Line Designs

FRI (#1036B) 11:30 AM - 12:15 PM
SHOWPLEX, ROOM E
SUN (#1036D) 2:30 - 3:15 PM
PAVILION, EXPO RUNWAY



Well, I've learned the hard way! It's faster to do something right the first time—rather than sew it together quickly, unsew it, and sew it again. Sandy will show you how to get great results on pockets, neckline finishes, hems, setting sleeves, even pinning. Avoid frustration and disappointment—follow Sandy's easy steps to your best garments.

1038 Diamonds are a Quilter's Best Friend

Krista Moser • Pineapple Fabrics

FRI (#1038B) 10:30 - 11:15 AM
PAVILION, EXPO RUNWAY

Tired of squares and rectangles? You're in luck, because diamonds are a quilter's best friend! Learn the tips and tricks for cutting and piecing diamonds, triangles, and hexagons in an easy, fast, and precise way. If you have been wanting to break out of the same old quilting routine, this class will inspire confidence and equip you with new skills.

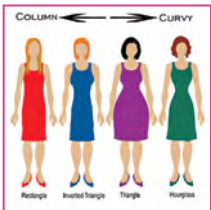


1039 Harmony in Design, Dress & Body Type

Laura Nash • Sew Chic Pattern Co.

FRI (#1039B) 11:30 AM - 12:15 PM
SUN (#1039D) 10:30 - 11:15 AM
PAVILION, EXPO RUNWAY

There are so many pattern design choices on the market—how do you put it all together in a flattering way? In this trunk show, identify your body type and how to bring harmony to your outfits. Using the elements of design, learn how to bring harmony and balance to your figure with color, texture, print, line, emphasis, proportion and more.



1040 Style Me Vintage

Laura Nash • Sew Chic Pattern Co.

THU (#1040A) 2:30 - 3:15 PM
SHOWPLEX, ROOM E
SAT (#1040C) 3:30 - 4:15 PM
SHOWPLEX, ROOM C

Imagine the gorgeous possibilities! Discover the flattering and timeless look of vintage-inspired patterns for the modern day woman. In this trunk show, learn how to mix patterns, use fabric and technique to create the classic vintage look, and shaping that will compliment your figure. This showcase of modern vintage fashions from Sew Chic Patterns is sure to encourage and inspire you.



1041 Thread Choice for Embroidery: Making Your Embroidery Pop

Andrew Ngai • WonderFil Specialty Threads

THU (#1041A) 9:30 - 10:15 AM
SUN (#1041D) 9:30 - 10:15 AM
SHOWPLEX, ROOM C

There are so many options for machine embroidery in thread weight, construction, materials, and finish! Go beyond transferring paper or computer graphics to textiles with 40wt embroidery thread—we'll open your eyes to the options. You'll see machine and hand embroidery samples to inspire you for your next embroidery project.



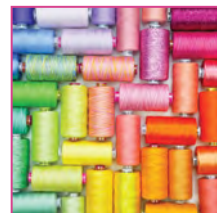
1042 Threaducation 101

Andrew Ngai • WonderFil Specialty Threads

FRI (#1042B) 10:30 - 11:15 AM
SHOWPLEX, ROOM D

SUN (#1042D) 10:30 - 11:15 AM
SHOWPLEX, ROOM G

This thread master class offers a concise overview of thread development, construction, production, material and color, and how these affect the selection of thread that best suits the application and purpose. Discover hints and tips on tension setting and choice and use of metallic thread. We will show samples that you can achieve, simply by "threaducating" yourself!



1043 Capsule Wardrobe Color-Mapping

Nancy Nix-Rice • Nancy Nix-Rice
Wardrobe Consulting

THU (#1043A) 8:30 - 9:15 AM
SAT (#1043C) 8:30 - 9:15 AM
SHOWPLEX, ROOM E

Learn how Nancy optimizes clients' wardrobes and get a head start on creating your own. Find your "key neutral" and a perfect print, then plan a dream wardrobe in that color scheme. See how color links make striking combinations from unexpected color pairings. Regardless of age, size or budget, any woman can make 100 flattering outfits for every occasion from just 12 strategic pieces.



1044 Pro Pointers for Ponte Knit

Nancy Nix-Rice • Nancy Nix-Rice
Wardrobe Consulting

FRI (#1044B) 8:30 - 9:15 AM
SUN (#1044D) 8:30 - 9:15 AM
SHOWPLEX, ROOM G

Stop wasting time on fabric flops! The new rayon/spandex ponte is a sewer's dream. It flatters any figure, sews easily, resists wrinkles, and is as comfy as our PJs—the perfect choice for your capsule wardrobe. Quickly learn ideal patterns, fit tricks, seams, interfacings, closures, neckline finishes, and soft-tailoring tips to make your garments look even better than ready-mades.

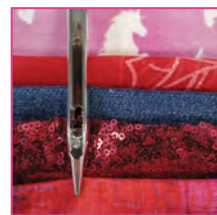


1045 What Needle Should I Use?

Rhonda Pierce • Social Media Lounge

FRI (#1045B) 2:30 - 3:15 PM
SUN (#1045D) 1:30 - 2:15 PM
PAVILION, EXPO RUNWAY

Confused about sewing machine needles? What do all those numbers mean on the needle pack? Is changing the needle before it breaks really important? Successful sewing is often about paying attention to the little things—like the needle in your machine. Get the solution to frequent thread problems and answers to common needle questions. Students will receive the always-popular SCHMETZ ABC Pocket Guide.



1046 Uzbek Ikat: The Personal Saga of an Exceptional Cloth

Marilyn Romatka • Taproot Folk Arts LLC

FRI (#1046B) 1:30 - 2:15 PM
PAVILION, EXPO RUNWAY

Experience the exotic from Expo: Travel to Central Asia in this multi-media presentation. We have all seen Uzbek Ikat on the runway in New York and London; now travel back to Uzbekistan with Marilyn to watch the production process. Each thread is manipulated, dyed, and woven into exquisite cloth—truly hand-crafted. Plus, a show-and-tell (and feel-and-photograph!)



1047 Quick Gifts From Your Fabric Scraps

Cindy Rowell • Wonderfil Specialty Threads

FRI (#1047B) 2:30 - 3:15 PM
SHOWPLEX, ROOM E

This class is filled with projects and creative ways to utilize your collection of scrap fabrics. Cindy will show off a variety of unique fast, easy-to-make projects, along with sewing tips and techniques that will save you time and money. You will leave class inspired and ready to use up, or at least reduce, your collection of fabric scraps!



1048 Reuse, Recycle, Embellish & Accessorize

Cindy Rowell • Wonderfil Specialty Threads

THU (#1048A) 2:30 - 3:15 PM
SHOWPLEX, ROOM C

SAT (#1048C) 3:30 - 4:15 PM
SHOWPLEX, ROOM E

Don't throw away your fabric scraps, buttons, broken jewelry pieces and other collectibles. It's amazing what unique pieces Cindy can create from "junk." You will be "sew" inspired by the unusual accessories Cindy has created and be leave eager to reuse, recycle, embellish & accessorize with your own junk!

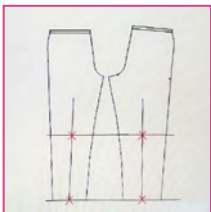


1049 Easy Bottoms That Fit

Kathy Ruddy • kathyruddy.com

SUN (#1049D) 10:30 - 11:15 AM
SHOWPLEX, ROOM E

Keep your trousers on and let Kathy show you everything you need to make the perfect bottoms. From fabric choice to adjusting the pattern to fit your seat, different leg styles and adjusting ease, and even adding waistline elastic. You'll want to wear these pants all day.



1050 Easy Tops That Fit

Kathy Ruddy • kathyruddy.com

FRI (#1050B) 1:30 - 2:15 PM
SHOWPLEX, ROOM D

Kathy will teach you everything you need to know about tops! She'll cover it all, from fabric selection to adjusting the shoulder angle, adding a bust dart, adjusting sleeve to fit your armhole and bicep with no puckers, and hem treatments to maximize stomach coverage. Kathy will show you the fastest and easiest way to put pieces together.



1051 Serger 911

Kathy Ruddy • kathyruddy.com

THU (#1051A) 9:30 - 10:15 AM
SHOWPLEX, ROOM D

SAT (#1051C) 1:30 - 2:15 PM
SHOWPLEX, ROOM G

All serger owners and prospective serger owners need this information. Kathy will teach you how the serger operates from the inside out. Learn about burrs, how width is used to improve stitches, and how to create a perfect balanced tension control strip to use for each new fabric and thread. She will also teach a sequential tension formula that works on any serger model and all thread types.



1052 Embroidery 101

Lisa Shaw • Kai Scissors

FRI (#1052B) 9:30 - 10:15 AM
SAT (#1052C) 9:30 - 10:15 AM
SHOWPLEX, ROOM D

So you have an embroidery machine (or are thinking about getting one), and are feeling a bit overwhelmed? Don't get lost in the lingo and acronyms! This class will reveal the inner secrets of machine embroidery and get you up and running with a variety of information so that you know the questions to ask as you begin this exciting journey.



1053 In The Hoop Embroidery Projects

Lisa Shaw • Kai Scissors

THU (#1053A) 1:30 - 2:15 PM
SAT (#1053C) 10:30 - 11:15 AM
SHOWPLEX, ROOM D

All machine embroidery is done "in the hoop," but did you know that you can make finished items like stuffed animals, zippered bags, key fobs, and more? You can even add personalization during the stitching process to create one-of-a-kind items. Learn construction tips and tricks to create these amazing little pieces at the machine with little or no sewing experience required.



1054 Vintage Threads with Machines

Lisa Shaw • Kai Scissors

FRI (#1054B) 1:30 - 2:15 PM
SHOWPLEX, ROOM C

Heavyweight threads can be used in the top thread for machine embroidery to create a vintage or hand embroidered look. However, special considerations need to be made when working with specialty threads. You'll learn about cover design choice and digitizing techniques, and what you need to do at the machine and after stitching to ensure beautiful results.



1055 Sewing Fashionable Upcycled Clothing

Susan Skalak • Esther's Fabrics

FRI (#1055B) 9:30 - 10:15 AM
SHOWPLEX, ROOM C
SUN (#1055D) 10:30 - 11:15 AM
SHOWPLEX, ROOM D

Learn to use thrift finds to make "new" fashionable clothing. I'll show you how to cut pattern pieces out of various fabrics, including a mix of recycled fabrics and new fabrics to replace worn-out pieces. Using shirts and men's suiting, you'll learn to restyle them with dye and embellishments.

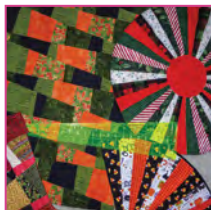


1056 Project Speed: Taking Advantage of a 10 Degree Ruler

Connie Spurlock • Sew Wonderful Dreams

FRI (#1056B) 2:30 - 3:15 PM
SUN (#1056D) 9:30 - 10:15 AM
SHOWPLEX, ROOM D

Using our ruler and a few tips, you can easily and quickly make many projects or piece 150 pieces of fabric in an hour. We'll give you the inspiration, you add the creative juices and you will love making some speedy gifts.



1057 Design Modern Scrappy Quilts Using Color Value

Blair Stocker • Drygoods Design

FRI (#1057B) 10:30 - 11:15 AM
SUN (#1057D) 9:30 - 10:15 AM
SHOWPLEX, ROOM E

When you understand color value and recognize it in your fabrics, you learn to design quilts, not just piece them. Blair will present a lecture/trunk show of quilts while discussing her tips and techniques of using color value to design scrappy quilts. It's a truly modern way to use up your stash fabric, precuts of your favorite fabric lines, or sentimental fabric you've been saving.

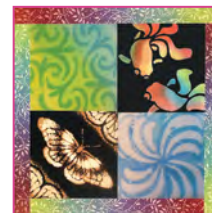


1058 Fabric Mania: 10 Ways to Craft Custom Fabric

Joyce Teng • TSC Designs

SAT (#1058C) 2:30 - 3:15 PM
SHOWPLEX, ROOM D

Have you ever wanted to transform a piece of boring fabric into something original and luminous? Joyce can show you unique techniques for creating printed and colored images on fabrics, from silk to cotton to polyester. Students will learn about five different mediums and how to apply them with various tools and layering stencils.



1059 Beautiful Bindings

Annie Unrein • ByAnnie.com LLC

FRI (#1059B) 12:30 - 1:15 PM
SUN (#1059D) 11:30 AM - 12:15 PM
SHOWPLEX, ROOM D

Join pattern designer and bag maker Annie Unrein for expert tips for binding edges on quilted fabric, vinyl, and mesh using a variety of techniques. Bindings add eye-catching accents, functionality, structure, and professional-quality finishes and take a project from homemade to designer quality.



1060 How to Fit a Dress Form to Your Body Shape

Joe Vecchiarelli • French European Inc.

THU (#1060A) 8:30 - 9:15 AM
SAT (#1060C) 8:30 - 9:15 AM
SHOWPLEX, ROOM G

One dress form can become your body shape in seconds, making fitting faster and more accurate. Learn to make simple adjustments on the form to fit your shape instantaneously. You'll receive information to fit the pattern to your shape.



1061 I've Padded My Dress Form, Now What?

Joe Vecchiarelli • French European Inc.

SAT (#1061C) 12:30 - 1:15 PM
SHOWPLEX, ROOM G

Now that you've padded your dress form, it's time to make it work for you! Joe is here to answer all the questions you may have about where to start. The front? The back? Do I use tissue paper or make a muslin? We'll dive into that arsenal of garment patterns and see what we can find. Oh, the things you can create when you have a 'twin!'



1062 Notions for Fashion

Joe Vecchiarelli • French European Inc.

FRI (#1062B) 8:30 - 9:15 AM
SUN (#1062D) 8:30 - 9:15 AM
SHOWPLEX, ROOM E

We all love to collect nifty little tools. Watch as Joe demonstrates how to use those tools to make your sewing easier! They will earn a permanent place in your sewing room, from the fashion ruler collection to the simplest button hole maker. We will discuss the important tools to make your sewing life easier.

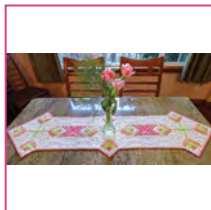


1063 Old Wives Tales, Common Knowledge & Other Lies We Tell New Quilters

Mech Watne • PerfectBorders.com

FRI (#1063B) 8:30 - 9:15 AM
PAVILION, EXPO RUNWAY
SUN (#1063D) 11:30 AM - 12:15 PM
SHOWPLEX, ROOM E

Like “i” before “e” except after “c...” lost some of its usefulness when the second half of the saying was dropped, many beginning quilters are taught incomplete rules, hindering their enjoyment and successful quilting. Mech will help quilters have more fun and get more done by explaining the rest of the rule, including what has been dropped or assumed.



1064 How to Embroider on Sheer Fabrics – AKA Removable Tattoos

Angela Wolf • Kai Scissors

THU (#1064A) 11:30 AM - 12:15 PM
SHOWPLEX, ROOM D
SAT (#1064C) 12:30 - 1:15 PM
SHOWPLEX, ROOM E

Designing your own sheer embroidered fabric is a hot trend, whether refashioning a garment or making something new. Learn techniques for embroidering on tulle, mesh, chiffon, and sheer knits. We'll discuss which thread, stabilizer, and needles work best together, and how to use these techniques to design your own fabric or cut out the embroidered design to embellish. Gain ideas on where to add this fabric, tips for sewing seams, and hemming.

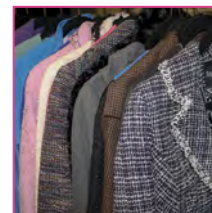


1065 Sewing & Fitting Jacket Sleeves

Angela Wolf • Kai Scissors

FRI (#1065B) 11:30 AM - 12:15 PM
SHOWPLEX, ROOM G

Sleeves can be a challenge to fit and sew but make the difference in sewing a professional-looking garment. Angela spent more than 20 years fitting and designing custom jackets for women all over the world, and will show you how to get the perfect sleeve. You'll learn how to compare your measurements to a sleeve pattern, alter a sleeve cap, and about bicep width, in addition to tips for sewing a set-in sleeve, sleeve head, shoulder pad, vent, and hemming.



1066 Tips & Techniques for Sewing Athleisure Wear

Angela Wolf • Kai Scissors

THU (#1066A) 8:30 - 9:15 AM
PAVILION EXPO RUNWAY
SAT (#1066C) 3:30 - 4:15 PM
SHOWPLEX, ROOM D

Athleisure has become a staple in our wardrobes—why not sew up your own! Angela will share tips and techniques for choosing fabrics and styles. She will cover the best sewing techniques, including stitches, coverstitching, needles, thread, hemming, zipper insertion, and much more. Leave this class ready to sew your next favorite yoga top and pair of leggings!



1067 Which Hem Should You Choose?

Angela Wolf • Kai Scissors

FRI (#1067B) 4:30 - 5:15 PM
SHOWPLEX, ROOM G

Whether you are sewing a garment from scratch or altering a ready-to-wear piece, choosing the correct hem can make all the difference. We'll start by learning how to mark a hem. Angela will offer techniques and tips for sewing a professional-looking blind hem with a sewing machine or serger, double fold hem, cuff, jeans hem, and a faced hem.



FREE 4-H Fashion Revue

Washington State 4-H

SAT (FREE) 12:30 - 1:15 PM
PAVILION, EXPO RUNWAY

Check out what 4-H members have been working on over the last year! Youth from all over the state have successfully competed in the 4-H Fashion Revue contest at the Washington State Fair in September and are all blue ribbon winners. Come see what the next generation of sewists have in store for the future of the industry.





90 minutes

\$20*

*Pre-registration is required.

Two Needle Classes

Kit Fees

Kit fees are payable directly to the instructor at the beginning of your class; exact change is appreciated.



Youth Sew

Look for this icon to find fun classes accessible for young (or less experienced) sewists.

Basic Sewing Supplies

Fabric & paper scissors, pins, seam ripper, seam gauge, ruler, measuring tape, sewing needles, chalk, pencil.

Ironing stations and a limited number of rotary cutters and mats will be available for use in class.

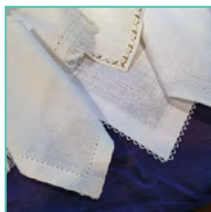
2001 Sewing Machines 101: This Stupid Machine Is Doing It Again!

Darrelle Anderson • Quality Sewing

THU (#2001A) 8:30 - 10:00 AM
SHOWPLEX, ROOM C

SAT (#2001C) 2:30 - 4:00 PM
PAVILION, EXPO RUNWAY

What are the hints and tricks every sewing machine owner should know? We'll cover it all, from when to change the needle, whether bobbin size matters, which tension setting is best, skipping stitches, tension, timing, nesting, and more. You'll go home feeling empowered to get through any project with your machine.



2002 Edges That Rock

Krista Ann • Great Yarns

SAT (#2002C) 12:30 - 2:00 PM
SHOWPLEX, ROOM B

It don't mean a thing if it ain't got that bling! Beads, spikes, and all things sparkly can be added to the edges of so many projects to zing up your knitting. Learn several techniques, tips, and tricks to adding something a little extra special into your next project. From cast on to bind off – there is always somewhere to add some pizzazz.



2003 Hollywood Finishing (Part 1 of 2)

Krista Ann • Great Yarns

FRI (#2003B) 12:30 - 2:00 PM
SHOWPLEX, ROOM B

There are many tricks to making your knitting look more polished and mimic machine-quality finishes. Learn 13 (probably more!) techniques and tricks to make your knitting look professional and incorporate something new into every project you work on. Discover the secrets used to be sure that each piece has flawless finishes!



2004 Hollywood Finishing (Part 2 of 2)

Krista Ann • Great Yarns

FRI (#2004B) 2:30 - 4:00 PM
SHOWPLEX, ROOM B

There are many tricks to making your knitting look more polished and feature machine quality finishes. Learn 13 MORE (and probably even more!) techniques and tricks to make your knitting look professional and incorporate something new into every project you work on. Discover the secrets used to be sure that each piece has flawless finishes.



2005 Properties of Yarn

Krista Ann • *Great Yarns*

SAT (#2005C) 2:30 - 4:00 PM
SHOWPLEX, ROOM B

There are so many materials that are being spun into yarn—it seems like new fibers are hitting the shelves every day! Learn what fibers work well for what types of projects. We'll focus on natural fibers, both mainstream and exotic. Make sure you are using the right fiber for your desired project.



2006 Get It? Got it! Gauge!

Winn Archambeau-Munoz • *Fibers Etc*

THU (#2006A) 12:30 - 2:00 PM
SHOWPLEX, ROOM B

SAT (#2006B) 2:30 - 4:00 PM
SHOWPLEX, ROOM F

In sewing we cut fabric to desired dimensions, but in knitting we make the fabric to fit! Being only a half a stitch off per inch can mean the difference between a garment that fits and one that doesn't. With demos, examples, and a handout, we will unravel the complexities of gauge swatching and adjusting.



2007 Embellish A Contemporary Wardrobe

Rae Cumbie • *Fit for Art Patterns*

THU (#2007A) 8:30 - 10:00 AM
SHOWPLEX, ROOM F

This trunk show features embellishments that will perk up your wardrobe and make new creations extra special. See techniques that create a picture, equalize or manipulate fabric, solve a hiccup or add another level of visual and textural interest. Decorate garments inside and out. Learn about techniques and materials that will encourage and guide your desire to play and embellish on fabric.



2008 Your Pants—Your Way

Rae Cumbie • *Fit for Art Patterns*

FRI (#2008B) 2:30 - 4:00 PM
SHOWPLEX, ROOM F

Pants are an integral part of any modern woman's wardrobe. They are not hard to sew—just tricky to fit. Explore the important steps in the pant fitting and design process. Consider what styles and details will work best with your lifestyle and fitting preferences, and consider traditional and modern fabrics that make great pants. You can begin planning your best pant wardrobe right in class.



2009 Eight Steps to a Perfect Bag

Pamela Damour • *The Decorating Diva*

THU (#2009A) 12:30 - 2:00 PM
SHOWPLEX, ROOM F

Making a perfect bag starts with the right finish. Learn finishing techniques to make bag straps, zipper insertions, pockets, bottoms and corners. Pam will show bags and demo techniques from her book, "Hold Everything."



2010 Power Serge

Pamela Damour • *The Decorating Diva*

SAT (#2010C) 12:30 - 2:00 PM
SHOWPLEX, ROOM C

Get the lowdown on some of the best serger techniques! It's all covered in Pam's newest book, "Power Serge." You'll see how to make the most of your serger's abilities. Explore the how, why, and where of double piping, pintucks, zipper insertions, making ruffles, pleats, and more. Her trunk show will start your creative juices flowing, and your serger will become a bigger part of your sewing practice.



2011 Get Your Craft On: Punch Needle Embroidery

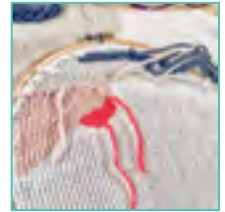
Keli Faw • *Drygoods Design*

SUN (#2011D) 8:30 - 10:00 AM
MOVED • SHOWPLEX, ROOM C

Catch the sensation that is bringing back the texture of past decades. In this introductory class, you'll learn the basics of punch needle and either can use a template design or create your own to start on your own piece of punch needle art. It's a great way to release some creative steam and also easy to start and stop.

\$45 kit fee. Amy Oxford punch needle (\$32 retail), stretched piece of monk's cloth on a wooden frame, optional artwork to transfer, and an assortment of tapestry yarns to get started

Student Supplies. Small scissors



2012 Get Your Dye On: Indigo Dyeing

Keli Faw • *Drygoods Design*

FRI (#2012B) 2:30 - 4:00 PM
SUN (#2012D) 12:30 - 2:00 PM
BRANKS, ROOM K

Catch the bug of being a designer through dye! You'll see how to work with a small-batch vat of indigo and learn more about various shibori-inspired techniques (including folding, tying, clamping, stitching) to create beautiful, one-of-a-kind dyed goods and textiles. After working on practice pieces, you'll create your own masterpieces using two natural fiber tea towels.

\$20 kit fee. Two finished tea towels, two test swatches, resist tools/aids, and waterproof bag to take home dyed items

Student Supplies. Dishwashing gloves & apron (optional but recommended)



Two Needle Classes THURSDAY

	Showplex Room B	Showplex Room C	Showplex Room F	Branks Room K
8:30 TO 10:00		2001 Sewing Machines 101: This Stupid Machine Is Doing It Again! <i>Darrelle Anderson</i>	2007 Embellish A Contemporary Wardrobe <i>Rae Cumbie</i>	
10:30 TO 12:00	2022 Modern Kantha Stitching <i>Annette Millard</i>	2031 Dress Form Draping <i>Joe Vecchiarelli</i>	2014 UnNecessary Necessary Notions <i>Judy Kessinger</i>	
12:30 TO 2:00		2037 Selecting Great Fabrics & Patterns for Body Shape & Lifestyle <i>Anne & Bruce Whalley</i>	2009 Eight Steps to a Perfect Bag <i>Pamela Damour</i>	
2:30 TO 4:00	2021 Easy, Common-Sense Fitting <i>Annette Millard</i>	2020 Machine Quilting in Sections <i>Marti Michell</i>	2017 How Body Measurements Relate to Your Pattern <i>Susan Lazear</i>	2016 Watercolor Hand Painted Fabrics <i>Cheryl Kuczek</i>

Two Needle Classes FRIDAY

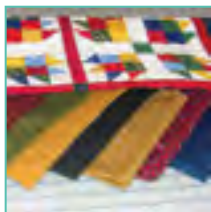
	Showplex Room B	Showplex Room C	Showplex Room F	Branks Room K
8:30 TO 10:00	2033 Using Correct Needles & Thread for Hand Sewing <i>Eloise Wagers</i>	2021 Easy, Common-Sense Fitting <i>Annette Millard</i>	2015 Make Woven Fabric with Denim <i>Cheryl Kuczek</i>	
10:30 TO 12:00	2028 Get Your Knit On: Two Stitches at a Time <i>Mackenzie Sasser</i>		2030 Draping a Pant <i>Joe Vecchiarelli</i>	
12:30 TO 2:00	2003 Hollywood Finishing (Part 1 of 2) <i>Krista Ann</i>	2013 Working with Today's Pre-Cut Fabrics <i>Nancy Goldsworthy</i>	2023 Social Media: Your New Best Sewing Friend <i>Annette Millard</i>	2016 Watercolor Hand Painted Fabrics <i>Cheryl Kuczek</i>
2:30 TO 4:00	2004 Hollywood Finishing (Part 2 of 2) <i>Krista Ann</i>	2035 Block Patterns Made Simply <i>Anne & Bruce Whalley</i>	2008 Your Pants — Your Way <i>Rae Cumbie</i>	2012 Get Your Dye On: Indigo Dyeing <i>Keli Faw</i>

2013 Working with Today's Pre-Cut Fabrics

Nancy Goldsworthy • PerfectBorders.com

FRI (#2013B) 12:30 - 2:00 PM
SHOWPLEX, ROOM C

You bought them — now what? Learn the tips and tricks to work with these fabulous collections. Nancy will discuss pattern options, imperfect cutting, picking additional fabrics, and more. We have them, we love them, and now we want to use them! Come join the fun of finishing! You'll see lots of sewn samples, project ideas, and ways to avoid the pit falls of pre-cuts.



2014 UnNecessary Necessary Notions

Judy Kessinger • FitNice System

THU (#2014A) 10:30 AM - 12:00 PM
SUN (#2014D) 10:30 AM - 12:00 PM
SHOWPLEX, ROOM F

We all love to collect nifty little tools. Watch Judy demonstrate how to use those tools to make your sewing easier. They will no longer be unnecessary! We'll start with gluing tricks, and you'll even learn how to "glue" in zippers for perfect stitching. End with the greatest tool for trim placement every time. This class will teach you all about the notions you use and those you don't!



Two Needle Classes SATURDAY

	Showplex Room B	Showplex Room C	Showplex Room F	Branks Room K	Pavilion Runway
8:30 TO 10:00	2022 Modern Kantha Stitching <i>Annette Millard</i>	2020 Machine Quilting in Sections <i>Marti Michell</i>	2034 Embroider Like A Designer <i>Katrina Walker</i>		2029 Shark Tank's Mr. Wonderful says "I need to make money!" Are you? <i>Connie Spurlock</i>
10:30 TO 12:00	2025 Tunisian Fashion Cuff <i>Sheila Rolfer</i>	2027 Copy Cat Sewing <i>Kathy Ruddy</i>	2019 Put the Fun Back into Sewing Fundamentals <i>Linda McLean</i>		
12:30 TO 2:00	2002 Edges That Rock <i>Krista Ann</i>	2010 Power Serge <i>Pamela Damour</i>	2018 Knock-Offs and Adaptations <i>Susan Lazear</i>		
2:30 TO 4:00	2005 Properties of Yarn <i>Krista Ann</i>	2036 Get the Most Out of Your Block Pattern! <i>Anne & Bruce Whalley</i>		2016 Watercolor Hand Painted Fabrics <i>Cheryl Kuczek</i>	2001 Sewing Machines 101: This Stupid Machine Is Doing It Again! <i>Darrelle Anderson</i>

Two Needle Classes SUNDAY

	Showplex Room C	Showplex Room F	Branks Room K	Pavilion Runway	Pavilion Theater 1
8:30 TO 10:00	2011 Get Your Craft On: Punch Needle Embroidery <i>Keli Faw</i>	2032 Perfect Pressing Techniques for Sewists <i>Eloise Wagers</i>			
10:30 TO 12:00	2024 Tunisian Crochet Washcloth <i>Sheila Rolfer</i>	2014 UnNecessary Necessary Notions <i>Judy Kessinger</i>			
12:30 TO 2:00		2026 Unique Machine Techniques <i>Cindy Rowell</i>	2012 Get Your Dye On: Indigo Dyeing <i>Keli Faw</i>		2038 Felt a Funky Bookmark <i>Jennifer Marker</i>

2015 Make Woven Fabric with Denim

Cheryl Kuczek • Paradiso Designs

FRI (#2015B) 8:30 - 10:00 AM
SHOWPLEX, ROOM F

Let's make fabric with all-American, iconic denim as a backdrop. This hands-on class will help students discover how simple changes in cutting or fabric strip width can result in three very different kinds of made fabric!

\$10 kit fee. Three sets of denim backgrounds and fabric/trim strips

Student Supplies. Basic sewing supplies, fabric scissors and pins



2016 Watercolor Hand Painted Fabrics

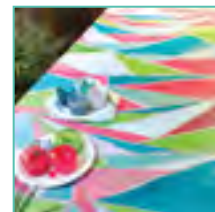
Cheryl Kuczek • Paradiso Designs

THU (#2016A) 2:30 - 4:00 PM
FRI (#2016B) 12:30 - 2:00 PM
SAT (#2016C) 2:30 - 4:00 PM
BRANKS, ROOM K

Achieving dreamy, translucent effects on fabric is a fun and simple process. This hands-on class will let you learn the freedom to explore shapes and colors. This is your chance to paint your own work of art!

\$20 kit fee. Distressed finished fabric, paint brush, pencil & paper, plastic zip bag for transport, paints, and watercolor instructional guide

Student Supplies. Favorite color of fine tip marker



2017 How Body Measurements Relate to Your Pattern

Susan Lazear • Cochenille Design Studio

THU (#2017A) 2:30 - 4:00 PM
SHOWPLEX, ROOM F

A little knowledge up front goes a long way to fit and create great clothing. In this lecture/demonstration, you will learn how to take meaningful and accurate body measurements. Then, we will take it one step further to discuss which parts of a pattern are impacted by proper and improper measurements. Apply your new knowledge to correct patterns prior to cutting fabric.



2018 Knock-Offs and Adaptations

Susan Lazear • Cochenille Design Studio

SAT (#2018C) 12:30 - 2:00 PM
SHOWPLEX, ROOM F

The process of 'knocking off' and/or adapting a garment is really not that difficult. Learn how to analyze photos and actual garments to determine how one creates them, either by modifying existing patterns or by creating your own. Learn how to analyze your fit preferences, determine the design details and translate these to a paper pattern. You will be amazed at how easy the process can be.



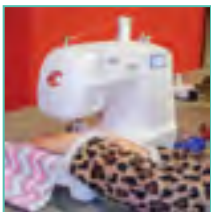
2019 Put the Fun Back into Sewing Fundamentals

Linda McLean • Washington State University

SAT (#2019C) 10:30 AM - 12:00 PM
SHOWPLEX, ROOM F

SUN (#2019D) 10:00 - 10:10 AM
PAVILION EXPO RUNWAY

Education to avoid frustration! This workshop is a must for anyone who works with youth — parents/guardians, teachers, Scout leaders, church groups, and more. Learn skills, tips and techniques to avoid frustration when teaching and enable people to work more effectively with youth.



2020 Machine Quilting in Sections

Marti Michell • Michell Marketing

THU (#2020A) 2:30 - 4:00 PM
SAT (#2020C) 8:30 - 10:00 AM
SHOWPLEX, ROOM C

Marti will share tips, techniques, and secrets for quilting big quilts in manageable sections, thus eliminating the frustration of trying to squeeze a queen-size quilt through the small opening of your sewing machine. Then, she shows you how to join the sections! Marti will share new methods that are not even in her best-selling book, "Machine Quilting in Sections." Save big \$\$\$ and have big satisfaction.



2021 Easy, Common-Sense Fitting

Annette Millard • Social Media Lounge

THU (#2021A) 2:30 - 4:00 PM
SHOWPLEX, ROOM B
FRI (#2021B) 8:30 - 10:00 AM
SHOWPLEX, ROOM C

"I don't sew for myself because patterns don't fit me." Does that sound familiar? It's not surprising — they don't fit any of us! Basic fitting doesn't have to be complicated or time-consuming, and Annette would love to show you how. This is not a method for precise fit, but a way of thinking that will make your handmade wardrobe much more fun, wearable and satisfying. Let's banish the fit monster!



2022 Modern Kantha Stitching

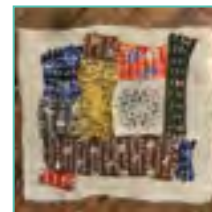
Annette Millard • Social Media Lounge

THU (#2022A) 10:30 AM - 12:00 PM
SAT (#2022C) 8:30 - 10:00 AM
SHOWPLEX, ROOM B

The traditional Indian art of Kantha is enjoying a well-deserved revival in our modern "throw-away" culture. Simple enough for beginners, interesting and creative enough for advanced sewists, there are infinite modern ways to use the Kantha technique for repurposing fabrics! The classic, gentle stitches are a marvelous way to add unique, creative embellishment without worrying about precision.

\$10 kit fee. Fabrics for piecing, batting, a variety of threads, needles, color handout

Student Supplies. Small fabric scissors, measuring tape or small ruler, pins, thimble (if desired), pencil & paper

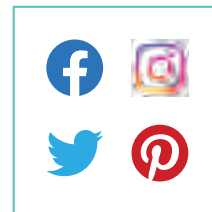


2023 Social Media: Your New Best Sewing Friend

Annette Millard • Social Media Lounge

FRI (#2023B) 12:30 - 2:00 PM
SHOWPLEX, ROOM F

Social media is a helpful friend that has changed the way we sew, quilt, and how we learn. Are you connected? Or not sure where to go and how to post? Annette will introduce you to an amazing buffet of inspiring sites commonly used by those who sew. From Facebook to Instagram to YouTube, blogs and more, she'll show you the exciting world of social sewing you can journey through from home!



2024 Tunisian Crochet Washcloth

Sheila Rolfer • Clover Needlecraft

SUN (#2024D) 10:30 AM - 12:00 PM
MOVED • SHOWPLEX, ROOM C

Want your bathroom to feel like a luxury spa? This class uses basic Tunisian Crochet stitches to form these attractive and functional washcloths. Learn basic Tunisian technique and start this beginning level project—which can be used to make hand towels, too!

Free kit. Tunisian crochet hook, cord and stopper, and yarn

Student Supplies. Scissors



2025 Tunisian Fashion Cuff

Sheila Rolfer • Clover Needlecraft

SAT (#2025C) 10:30 AM - 12:00 PM
SHOWPLEX, ROOM B

Add a little panache with a Tunisian Fashion Cuff. This class is a primer on Tunisian Crochet stitches. There's so much more to this resurging craft than the Afghan stitch. See how to combine stitches to form this fun and fashionable project—and you can make it truly yours by incorporating special buttons.

Free kit. Tunisian crochet hook, cord, stopper, and yarn

Student Supplies. Scissors



2026 Unique Machine Techniques

Cindy Rowell • Wonderfil Speciality Threads

SUN (#2026D) 12:30 - 2:00 PM
SHOWPLEX, ROOM F

Cindy has created unique techniques that look like they are done by hand—but are actually done by machine. You will be amazed to see how easy it is to use your machine to do smocking, silk ribbon embroidery, beading, and more, with no special feet or attachments. Techniques that took hours to do by hand are now quick and easy on the machine.



2027 Copy Cat Sewing

Kathy Ruddy • kathyruddy.com

SAT (#2027C) 10:30 AM - 12:00 PM
SHOWPLEX, ROOM C

Learn techniques that will let you sew clothes just like the ones you already own and love! You'll identify the reasons they're so well liked, then decide what to copy and how to do it. Explore Kathy's tried-and-true steps for copying sleeves, darts, seams and gathers, identifying grain line, and more, as you discover how to create a whole new wardrobe!



2028 Get Your Knit On: Two Stitches at a Time

Mackenzie Sasser • Drygoods Design

FRI (#2028B) 10:30 AM - 12:00 PM
SHOWPLEX, ROOM B

SUN (#2028C) 10:30 - 2:00 PM
SHOWPLEX, ROOM B

Knitting is the craft where you get to create the fabric, and after mastering the two basic stitches you can tackle more projects big and small. Today, we'll start small with the foundation of any project—a swatch. Where you take it is up to you!

\$25 kit fee. One pair circular knitting needles, one 50g skein of yarn, and one tapestry needle

Student Supplies. Small scissors, measuring tape, notebook



2029 Shark Tank's Mr. Wonderful says "I need to make money!" Are you?

Connie Spurlock • Sew Wonderful Dreams

SAT (#2029C) 8:30 - 10:00 AM
PAVILION, EXPO RUNWAY

You may have a business, sales, and even cash ... but do you have a profit? Money in your pocket does not mean that you are "in the black." Learn what you need to know, assess what your profit is, see where you can cut costs, and know your market. Where can you buy wholesale? Are you missing deductions that are costing you? Learn how to price to make a profit.



2030 Draping a Pant

Joe Vecchiarelli • French European Inc.

FRI (#2030B) 10:30 AM - 12:00 PM
SHOWPLEX, ROOM F

Learn to do a simple drape to make straight leg pants, tight fitted pants, and palazzo pants (lots of flare). No matter your body shape or size, these draping techniques will eliminate pattern frustrations from pants that do not fit.



2031 Dress Form Draping

Joe Vecchiarelli • French European Inc.

THU (#2031A) 10:30 AM - 12:00 PM
SHOWPLEX, ROOM C

Discover how to start with a dress form and drape it to fit the figure. From there, see how to create your own, personally-fitted princess line garment for comfort and style. You will learn how to work with a form to design a garment, and gain insight on going from body form to fashion with confidence.



2032 Perfect Pressing Techniques for Sewists and Quilters

Eloise Wagers • Clover Needlecraft

SUN (#2032D) 8:30 - 10:00 AM
SHOWPLEX, ROOM F

Learn the pressing/ironing techniques and tools needed to create more perfect outcomes. These skills are just as important as sewing itself. Learn how to use the right pressing tools for your projects and how to select them.

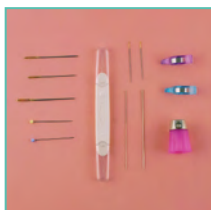


2033 Using Correct Needles & Thread for Hand Sewing

Eloise Wagers • Clover Needlecraft

FRI (#2033B) 8:30 - 10:00 AM
SHOWPLEX, ROOM B

Relax and enjoy this hands-on class. We'll learn about selecting the correct needle and thread for hand sewing hems, buttonholes, quilting, embroidery, and beading.



\$1 kit fee. Threads and needles, sample fabric, thimble, and needle threader

Student Supplies. Scissors

2034 Embroider Like A Designer

Katrina Walker • PFAFF / Quality Sewing

SAT (#2034C) 8:30 - 10:00 AM
SHOWPLEX, ROOM F

Beautiful fashion embroidery is no accident! It is the result of simple tools and techniques you can learn to do yourself. Learn how to plan, design, and stitch even the most complex embroidery from start to finish. See the actual processes behind the beautiful embroidery you've seen in advertisements and magazines. Katrina will share a stunning trunk show of actual garments that will inspire you to create!



2035 Block Patterns Made Simply

Anne & Bruce Whalley
• The Sewing and Design School

FRI (#2035B) 2:30 - 4:00 PM
SHOWPLEX, ROOM C

Anne and Bruce will discuss the benefits of block patterns and answer questions, then demonstrate how to take the correct measurements for accuracy and simplicity and create a block pattern on stage.



2036 Get the Most Out of Your Block Pattern!

Anne & Bruce Whalley
• The Sewing and Design School

SAT (#2036C) 2:30 - 4:00 PM
SHOWPLEX, ROOM C

There are so many benefits to using block patterns! We'll discuss how to use your block pattern with commercial patterns to get the best fit and features for your body shape, activities, and lifestyle.



2037 Selecting Great Fabrics & Patterns for Body Shape & Lifestyle

Anne & Bruce Whalley
• The Sewing and Design School

THU (#2037A) 12:30 - 2:00 PM
SHOWPLEX, ROOM C

Do you struggle with picking the best pattern for YOU? Anne can help. Anne and Bruce will model clothing props to demonstrate the options available, including color, lines, fabric types, fabric drape, necklines, hemlines, sleeve styles, and more, to help you choose the best patterns and style features for your life.



• 2038 Felt a Funky Bookmark

Jennefer Marker • Compass Moon Creations

SUN (#2038D) 12:30 - 2:00 PM
PAVILION, THEATER 1

Join fiber artist Jennefer Marker to learn about wet felting, an ancient textile technique that combines wool fibers, soap, water and agitation. We will make beautiful hand-felted bookmarks out of wool and funky yarns in your favorite colors to take home with you that day.

\$15 kit fee. Wool fiber and embellishments



Three Needle Classes

2½ hours

\$30*

*Pre-registration is required.



Kit Fees

Kit fees are payable directly to the instructor at the beginning of your class; exact change is appreciated.



Youth Sew

Look for this icon to find fun classes accessible for young (or less experienced) sewists.

Basic Sewing Supplies

Fabric & paper scissors, pins, seam ripper, seam gauge, ruler, measuring tape, sewing needles, chalk, pencil.

Ironing stations and a limited number of rotary cutters and mats will be available for use in class.

3001 Beginning Brioche

Krista Ann • Great Yarns

FRI (#3001B) 8:00 - 10:30 AM
FAIR VIEW, 1ST FLOOR

Brioche is everywhere these days and you can get as crazy with your designs as you want. But first, you must learn the basics of the brioche stitch! Learn the special cast on and bind off and all the brioche awesomeness in between. Master the basics and then the sky is the limit.

Student Supplies. Two high-contrast colors in a heavy worsted weight yarn (Cascade 128 Superwash is recommended) and needles to match; general knitting tools (needle, scissors, pencil, etc.)



3002 Reversible Cables

Krista Ann • Great Yarns

SAT (#3002C) 8:00 - 10:30 AM
FAIR VIEW, 1ST FLOOR

Cables are pretty amazing and can create dimension and add intrigue to your project—but their backside isn't so pretty. Do you hate having to make sure your cabled scarf is facing the "right way?" With reversible cables, it doesn't matter which way shows because both the front and the back will be identical!

Student Supplies. Smooth, light-colored, worsted weight yarn that does not split easily, needles to match yarn, cable needle, basic knitting supplies (scissors, tapestry needle, etc.)



3003 Fear No Fabric!

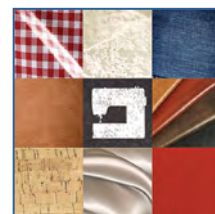
Sylvain Bergeron • Sewing Machine Service of Renton/Bernina

THU (#3003A) 2:00 - 4:30 PM
SAT (#3004C) 11:00 AM - 1:30 PM
EXPO HALL, BERNINA

Don't let tricky fabrics stop you! Learn how to tackle a variety of challenging fabrics with assurance and ease. With the right stitch, presser foot and settings, you can sew any fabric successfully. Be fearless. A printed copy of the slides will be provided.

\$20 kit fee. All fabrics, thread and sewing machine needles

Student Supplies. Paper and pen for notes.



3004 Put Your Best Foot Forward

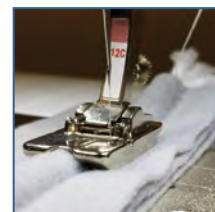
Sylvain Bergeron • Sewing Machine Service of Renton/Bernina

FRI (#3004B) 11:00 AM - 1:30 PM
SAT (#3004C) 2:00 - 4:30 PM
EXPO HALL, BERNINA

Every sewing machine comes with a set of standard presser feet for basic techniques, and we all try to push those feet to their maximum capabilities—sometimes with less-than-favorable results. Learn how easy it can be to step up to a new foot, still designed for a basic function, that will open doors to your adventurous side. Standard, zipper, blind hem and decorative feet will be used.

\$20 kit fee. All fabric pieces used in the class, thread for needle, and bobbin

Student Supplies. Basic sewing supplies, thread snips, tweezers, pen and paper



Three Needle Classes (MACHINE SEWING)

THURSDAY

	Expo Hall Baby Lock	Expo Hall Bernina	Expo Hall Brother	Expo Hall Pfaff	Expo Hall Viking	Showplex Janome
8:00 TO 10:30	3025 Anytime Table Runner <i>Sara Gallegos</i>	3040 Find Your Van Gogh <i>Debbi Lashbrook</i>	3078 Dolly Swimsuit with Skirt & Beach Chair <i>Nadeen Ward</i>	3023 Straight Stitch Machine Embroidery <i>Barbara Eikmeier</i>	3072 Don't be in a "Bind" <i>Connie Spurlock</i>	3080 Quilt Piecing Fun at Highway Speed <i>Mech Watne</i>
11:00 TO 1:30	3044 Heirloom Serging - Bolster Pillow <i>Pamela Leggett</i>	3050 It's a Mystery <i>Linda McGehee</i>	3011 Bias-waist Pallazo Pant <i>Nick Coman</i>	3077 Sewing with Silk <i>Katrina Walker</i>	3061 What Needle Do I Use? Exploratory Hands-On Class <i>Rhonda Pierce</i>	3006 Perfect Hemstitching <i>Kandi Christian</i>
2:00 TO 4:30	3037 Sew the Seattle Shirt Pattern <i>Heidi Hilmerson</i>	3003 Fear No Fabric! <i>Sylvain Bergeron</i>	3028 Button Box Quilt <i>Nancy Goldsworthy</i>	3017 Pendleton Two-Toned Wool Tote Bag <i>Stacy Cook-Brisbee</i>	3034 Add an Inside Zipper Pocket to Any Bag or Purse <i>Erin Hentzel</i>	3047 Learn to Sew: Waxed Canvas and Leather Portsmouth Tote <i>Ellie Lum</i>

FRIDAY

	Expo Hall Baby Lock	Expo Hall Bernina	Expo Hall Brother	Expo Hall Pfaff	Expo Hall Viking	Showplex Janome
8:00 TO 10:30	3026 Candy & Cork Zipper Pouch <i>Sara Gallegos</i>	3041 Quilted Art Bag <i>Debbi Lashbrook</i>	3024 Make a Fully-Lined Zipper Pouch with Faux Leather <i>Isabela Felix Cicero</i>	3032 Sewing Drawer Organizer Make & Take <i>Lois Hallock</i>	3033 There's More to Sleeves Than Meets the "EYE" <i>Lorraine Henry</i>	3014 Pendleton Origami Bag <i>Stacy Cook-Brisbee</i>
11:00 TO 1:30	3049 Add Art with Serger Texture <i>Linda McGehee</i>	3004 Put Your Best Foot Forward <i>Sylvain Bergeron</i>	3020 Magic Miter & More! <i>Pamela Damour</i>	3048 Crazy Kaleidoscope Quilting <i>Julie Luoma</i>	3072 Don't be in a "Bind" <i>Connie Spurlock</i>	3007 Pin Tucks, Pin Tucks and Yes — More Pin Tucks! <i>Kandi Christian</i>
2:00 TO 4:30	3043 Flat Lock Bed Linens on the Serger <i>Pamela Leggett</i>	3008 Cuddle Up with Appliqué! <i>Teresa Coates</i>	3052 So Soft Suede Bottom Slippers <i>Sheila McKay</i>	3075 Sew Knits with Confidence <i>Katrina Walker</i>	3016 Pendleton Table Runner <i>Stacy Cook-Brisbee</i>	3018 Create a Carol's Zoo Bear <i>Carol Cruise</i>

3005 No Tracing Appliqué

Dee Brown • *The Quilted Trillium*

FRI (#3005B) 2:00 - 4:30 PM

FAIR VIEW, 1ST FLOOR

SUN (#3005D) 8:00 - 10:30 AM

FAIR VIEW, 2ND FLOOR

See how fast and easy raw-edge appliqué is when you don't have to do all that tedious tracing. You will leave class with this cute little "S'mores" project cut, fused and ready to topstitch.

\$24 kit fee. All fabric to complete the top, pattern, and fusible

Student Supplies. Mini iron & ironing pad, small sharp scissors, transparent Teflon iron sheet



3006 Perfect Hemstitching

Kandi Christian • *Sew Timeless*

THU (#3006A) 11:00 AM - 1:30 PM

SHOWPLEX, JANOME

When you admire beautifully hemmed towels, napkins, garments, and more, do you wish you could get the same result? Learn how here! First you'll make a sample the "usual" way, and then make a sample with perfect results. You'll also make samples with matching and contrast thread to see which is best.

\$15 kit fee. 100% linen fabric, hemstitching needle, steam-a-seam, stabilizer, and instruction booklet

Student Supplies. Basic sewing supplies, white thread



SATURDAY

	Expo Hall Baby Lock	Expo Hall Bernina	Expo Hall Brother	Expo Hall Pfaff	Expo Hall Viking	Showplex Janome
8:00 TO 10:30	3025 Anytime Table Runner <i>Sara Gallegos</i>	3040 Find Your Van Gogh <i>Debbi Lashbrook</i>	3050 It's a Mystery <i>Linda McGehee</i>	3023 Straight Stitch Machine Embroidery <i>Barbara Eikmeier</i>	3010 Bias Tee <i>Nick Coman</i>	3013 Pendleton Checkered Weave Felt Binding Pillow <i>Stacy Cook-Brisbee</i>
11:00 TO 1:30	3037 Sew the Seattle Shirt Pattern <i>Heidi Hilmerson</i>	3003 Fear No Fabric! <i>Sylvain Bergeron</i>	3029 Garden Friends <i>Nancy Goldsworthy</i>	3031 Fast & Fun Fat Quarter Storage Containers <i>Lois Hallock</i>	3036 Trendy Mini Skirt or Messenger Bag for 18" Dolls <i>Erin Hentzel</i>	3080 Quilt Piecing Fun at Highway Speed <i>Mech Watne</i>
2:00 TO 4:30	3044 Heirloom Serging—Bolster Pillow <i>Pamela Leggett</i>	3004 Put Your Best Foot Forward <i>Sylvain Bergeron</i>	3028 Button Box Quilt <i>Nancy Goldsworthy</i>	3056 Pop the Cork! Sew a Project Tote <i>Annette Millard</i>	3061 What Needle Do I Use? Exploratory Hands-On Class <i>Rhonda Pierce</i>	3047 Learn to Sew: Waxed Canvas and Leather Portsmouth Tote <i>Ellie Lum</i>

SUNDAY

	Expo Hall Baby Lock	Expo Hall Bernina	Expo Hall Brother	Expo Hall Pfaff	Expo Hall Viking	Showplex Janome
8:00 TO 10:30	3026 Candy & Cork Zipper Pouch <i>Sara Gallegos</i>	4002 Playful Couture <i>Mary Collen</i> SEE PAGE 37.	3024 Make a Fully-Lined Zipper Pouch with Faux Leather <i>Isabela Felix Cicero</i>	3076 Sew Like A Designer <i>Katrina Walker</i>	3039 Pleather Handbag Sewing Techniques <i>Cheryl Kuczek</i>	3018 Create a Carol's Zoo Bear <i>Carol Cruise</i>
11:00 TO 1:30	3021 Three Bags Full <i>Pamela Damour</i>		3009 Step by Step: Soft and Simple Cuddle Quilts <i>Teresa Coates</i>	3051 Owl Stuffed Animal <i>Sheila McKay</i>	3035 Make a Trendy Knit Skirt for YOU! <i>Erin Hentzel</i>	3053 Traditional Native American Moccasins <i>Linda McLean</i>

3007 Pin Tucks, Pin Tucks and Yes—More Pin Tucks!

Kandi Christian • Sew Timeless

FRI (#3007B) 11:00 AM - 1:30 PM
SHOWPLEX, JANOME

Twin needles aren't just for sewing straight lines, and they're not just for heirloom sewing. But for pin tucks—they're perfect. While making a contemporary pillow, you'll sew pin tucks in serpentine arcs and concentric circles to create fantastic effects. See what your fellow students dream up and surprise them with your unique designs.

\$25 kit fee. 100% cotton batiste in two colors, pin tuck needle, two spools cotton heirloom thread, and instruction booklet

Student Supplies. Basic sewing supplies, small terry towel for pressing



3008 Cuddle Up with Appliqué!

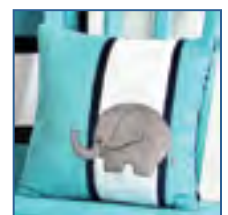
Teresa Coates • Dutch Quilters

FRI (#3008B) 2:00 - 4:30 PM
EXPO HALL, BERNINA

If you've wondered if it's possible to do appliqué with Cuddle Minky, here's your chance to learn just how to do it! Join Shannon Fabrics' educator Teresa Coates for a workshop that will teach you how easy it is to make a simple stripe and elephant appliqué pillow using Cuddle fabrics.

\$35 kit fee. Fabrics and pattern

Student Supplies. Basic sewing supplies, Stiletto



Three Needle Classes (NO MACHINE)

THURSDAY



	Fair View 1st Floor	Fair View 2nd Floor	Pavilion Theater 1	Pavilion Theater 2
8:00 TO 10:30	3064 More To Explore In Beaded Buttons <i>Cindy Rowell</i>	3057 Introduction to English Paper Piecing <i>Shannon & Jason Mullett-Bowlsby</i>	3073 Not Your Grandmother's Lace <i>Joyce Teng</i>	3019 Designing Your Own Window Treatment <i>Pamela Damour</i>
11:00 TO 1:30	3038 Wool Penny Sampler Project <i>Charisma Horton</i>	3045 Anastasia Bracelet <i>Amy Loh Kuser</i>	3069 Beginning Sashiko Sampler <i>Becky Scellato</i>	3059 Adjustments for a Beautiful Bust <i>Laura Nash</i>
2:00 TO 4:30		3030 Primitive Rug Hooking – Mug Rug <i>Robin Halliday</i>	3062 Dragon Boat Decorations – Magic with Ribbon <i>Marilyn Romatka</i>	3066 Awesome Athleisure: Wear it Anywhere <i>Kathy Ruddy</i>

FRIDAY



	Fair View 1st Floor	Fair View 2nd Floor	Pavilion Theater 1	Pavilion Theater 2
8:00 TO 10:30	3001 Beginning Brioche <i>Krista Ann</i>	3058 Visible Mending in the Modern World <i>Shannon & Jason Mullett-Bowlsby</i>	3074 Ocean Odyssey <i>Joyce Teng</i>	3046 Deliah Necklace <i>Amy Low-Kuser</i>
11:00 TO 1:30	3038 Wool Penny Sampler Project <i>Charisma Horton</i>	3081 Beginning Needle Felting Workshop <i>Jennefer Marker</i>	3070 Sashiko Drawstring Bag <i>Becky Scellato</i>	3022 Hands-On Digitizing Workshop <i>John Deer</i>
2:00 TO 4:30	3005 No Tracing Appliqué <i>Dee Brown</i>	3055 From Thread to Lace <i>Carol Mesimer</i>	3027 Basic Singer Featherweight Maintenance <i>Darlene Girtan</i>	3042 Adding Pizzazz to your Patterns <i>Susan Lazear</i>

3009 Step by Step: Soft and Simple Cuddle Quilts

Teresa Coates • Dutch Quilters

SUN (#3009D) 11:00 AM - 1:30 PM
EXPO HALL, BROTHER

If you've always wanted to make a Cuddle quilt but weren't sure how, here's your chance to learn from the expert. Join Shannon Fabrics' educator Teresa Coates and learn how easy it is to make Cuddle strip quilts. Learn the techniques and tools that will make creating with Cuddle fun and easy. Plus, learn how to use Cuddle for binding any quilt!

\$35 kit fee. Fabric for quilted sample and binding, batting, and pattern

Student Supplies. Basic sewing supplies, walking foot



3010 Bias Tee

Nick Coman • French European Inc.

SAT (#3010C) 8:00 - 10:30 AM
EXPO HALL, VIKING

Make this easy-to-wear bias tee shirt. It's simple to sew, easy to wear and will become one of your go-to pieces for combining. Take beautiful fabrics you have been saving and use them for a truly one-of-a-kind top. Learn tips and tricks for sewing with bias, as well as finishing tips to make you look like a pro.

\$40 kit fee. Fabric for top, thread, pattern and instructions

Student Supplies. Basic sewing supplies

**Sewing &
Stitchery**
e·x·p·o

SATURDAY



	Fair View 1st Floor	Fair View 2nd Floor	Pavilion Theater 1	Pavilion Theater 2
8:00 TO 10:30	3002 Reversible Cables <i>Krista Ann</i>	3045 Anastasia Bracelet <i>Amy Loh Kasper</i>	3057 Introduction to English Paper Piecing <i>Shannon & Jason Mullett-Bowlsby</i>	3065 Thread Art Cards <i>Cindy Rowell</i>
11:00 TO 1:30	3062 Dragon Boat Decorations – Magic with Ribbon <i>Marilyn Romatka</i>	3030 Primitive Rug Hooking – Mug Rug <i>Robin Halliday</i>	3071 Yazzii Bag Meets Boro & Sashiko <i>Becky Scellato</i>	3060 Intro to the Dressmaker's Glove for Women <i>Laura Nash</i>
2:00 TO 4:30	3054 Upcycle Your Wardrobe <i>Linda McLean</i>	3082 Beginning Patternmaking <i>Katrina Walker</i>	3015 Pendleton Selvage Crochet Rug <i>Stacy Cook-Brisbee</i>	3038 Wool Penny Sampler Project <i>Charisma Horton</i>

SUNDAY



	Fair View 1st Floor	Fair View 2nd Floor	Pavilion Theater 1	Pavilion Theater 2	Showplex Room B
8:00 TO 10:30	4018 Beginning Inkle Loom Weaving <i>Marilyn Romatka</i> SEE PAGE 40.	3005 No Tracing Appliqué <i>Dee Brown</i>	3058 Visible Mending in the Modern World <i>Shannon & Jason Mullett-Bowlsby</i>	3063 Chicken Scratch Sampler <i>Cindy Rowell</i>	3022 Hands-On Digitizing Workshop <i>John Deer</i>
11:00 TO 1:30		3012 Pendleton “Don’t Get Poked” Needle Felting <i>Stacy Cook-Brisbee</i>	2038 Felt a Funky Bookmark <i>Jennefer Marker</i> SEE PAGE 20.	3055 From Thread to Lace <i>Carol Mesimer</i>	3042 Adding Pizzazz to Your Patterns <i>Susan Lazear</i>

3011 Bias-Waist Palazzo Pant

Nick Coman • French European Inc.

THU (#3011A) 11:00 AM - 1:30 PM
EXPO HALL, BROTHER

This pant will easily fit in as part of your core wardrobe. Make them up in a variety of fabrics for a different look for every occasion. This pant goes together quickly and is comfortable because of the smooth elastic waist treatment. After making a pair of these, you won't go back to regular elastic waist pant ever again.

\$50 kit fee. Fabric for pants, elastic, thread, pattern and written instructions

Student Supplies. Basic sewing supplies

Sewing &
Stitchery
e.x.p.o.

3012 Pendleton “Don’t Get Poked” Needle Felting

Stacy Cook-Brisbee • Pendleton Woolen Mills

SUN (#3012D) 11:00 AM - 1:30 PM
FAIR VIEW, 2ND FLOOR

This is a beginner's needle felting class. We'll sculpt cactus out of wool! This class will take you through the basics of needle felting, along with making some fun cacti and a few flowers. Grab a friend and spend a few hours together to make a sculpted cacti. This class is for ages 10 years and up.

\$25 kit fee. Basic needle felting kit (5 Needle Felting Tool, Foam Block, 12 Pendleton Roving Colors)



3013 Pendleton Checkered Weave Felt Binding Pillow

Stacy Cook-Brisbee • Pendleton Woolen Mills

SAT (#3013C) 8:00 - 10:30 AM
SHOWPLEX, JANOME

New pillows instantly add a bright pop of color to any room. These are stylish and fun to make. We will show you how to adhere the wool felt binding to make a solid front to this pillow, and the back is a simple envelope closure.

\$25 kit fee. Pendleton felt binding, Pellon 820 quilter's grid 1" fusible interfacing, Pendleton wool flannel weight fabric, one 12.5" x 15" pillow form

Student Supplies. Basic sewing supplies



3014 Pendleton Origami Bag

Stacy Cook-Brisbee • Pendleton Woolen Mills

FRI (#3014B) 8:00 - 10:30 AM
SHOWPLEX, JANOME

Sew this simple bag in a snap! One pattern piece, simplified zipper installation and a magic fold-and-stitch technique make it a fun, fast project. Once you've completed one in class, you can make them in any size – and you'll want to! Create a gift for someone else or a little something special for yourself.

\$25 kit fee. Pendleton fabric, zipper, and matching thread

Student Supplies. Basic sewing supplies



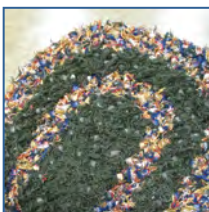
3015 Pendleton Selvage Crochet Rug

Stacy Cook-Brisbee • Pendleton Woolen Mills

SAT (#3015C) 2:00 - 4:30 PM
PAVILION, THEATER 1

Our most popular class! Reduce, recycle, and reuse with this fun and easy crochet rug, brought to you by Pendleton. Turn wool selvage into a cozy rug with a large crochet hook. No experience is necessary to bring this rug home.

\$25 kit fee. 5 pounds of wool selvage, crochet hook size Q, instructions, scissors



3016 Pendleton Table Runner

Stacy Cook-Brisbee • Pendleton Woolen Mills

FRI (#3016B) 2:00 - 4:30 PM
EXPO HALL, VIKING

Bring a touch of Pendleton to your table. Pendleton's color selection will complement any household design scheme. We'll use a blanket weight jacquard fabric and wool felt binding kit. You will walk out with your one-of-a-kind creation to accent any table in your home.

\$30 kit fee. Pendleton Wool Jacquard fabric, wool felt binding, and sewing thread

Student Supplies. Basic sewing supplies



3017 Pendleton Two-Toned Wool Tote Bag

Stacy Cook-Brisbee • Pendleton Woolen Mills

THU (#3017A) 2:00 - 4:30 PM
EXPO HALL, PFAFF

Learn to make this clever tote bag out of Pendleton wool. This fully-lined bag has a removable hard bottom, so it sits firmly on a table. Customize the straps and the size for your very own personal creation.

\$30 kit fee. Pendleton Jacquard fabric, cotton strapping, lining, and a hard bottom form

Student Supplies. Basic sewing supplies



3018 Create a Carol's Zoo Bear

Carol Cruise • Carol's Zoo

FRI (#3018B) 2:00 - 4:30 PM
SUN (#3018D) 8:00 - 10:30 AM
SHOWPLEX, JANOME

Choose from a variety of Carol's Zoo Bear Kits to create a wonderful faux fur animal, to keep for yourself or give to a child.

\$45/\$60 kit fee. Carol's Zoo Pattern (cost depends on pattern selected), faux fur, safety eyes and nose, neck ribbon, and Fiberfill

Student Supplies. Basic sewing supplies, neutral color thread; 1 1/2" all-purpose pins with ball head, sharp embroidery scissors (4" or 5", such as Gingher or Kai)



3019 Designing Your Own Window Treatment

Pamela Damour • The Decorating Diva

THU (#3019A) 8:00 - 10:30 AM
PAVILION, THEATER 2

Custom window treatments don't need to be difficult – once you learn a few easy steps. Join Pam, The Decorating Diva, as she demystifies how the trade makes custom window treatments. This workshop is a design class, where you will design and cut out your window treatment, getting them ready to sew.

\$25 kit fee. Home decor fabric, accent fabric and lining to make a single window-size top treatment

Student Supplies. Basic sewing supplies



3020 Magic Miter & More!

Pamela Damour • The Decorating Diva

FRI (#3020B) 11:00 AM - 1:30 PM
EXPO HALL, BROTHER

Learning how to execute perfect miters to professionally finish the corners of your home décor, garment and quilting projects. In this technique workbook class, you'll learn mitered corners with and without linings, mitered binding, mitered borders, reverse miters, asymmetrical miters and more. You'll never be afraid to attempt a miter again!

\$25 kit fee. Fabrics, notions, instructions, and sheet protectors

Student Supplies. Basic sewing supplies



3021 Three Bags Full

Pamela Damour • The Decorating Diva

SUN (#3021D) 11:00 AM - 1:30 PM
EXPO HALL, BABY LOCK

Make three bags from Pam's book "Hold Everything." You will make the grab & go make-up bag, the electronics bag and the zip-it eyeglass holder. In addition to learning three different zipper techniques, you'll use three stabilizers and finishing techniques. Using cover stitch, chain stitch and overlock, these bags are easy and fun to make!

\$25 kit fee. All fabrics, stabilizers, and zippers cut to size

Student Supplies. Basic sewing supplies



3022 Hands-On Digitizing Workshop

John Deer • John Deer's Embroidery Legacy

FRI (#3022B) 11:00 AM - 1:30 PM
PAVILION, THEATER 2

SUN (#3022D) 8:00 - 10:30 AM
MOVED • SHOWPLEX, ROOM B

Yes, you read the title correctly! This is a hands-on digitizing workshop geared not only to those who are considering digitizing, but also to those who have been digitizing for years. The class is all about the initial foundation of theory John learned from his Schifflli mentor. Students will learn the most important information they'll need about digitizing.

\$10 kit fee. Custom USB with files, artwork, and PDF workbook

Student Supplies. Laptop with USB, computer mouse



3023 Straight Stitch Machine Embroidery

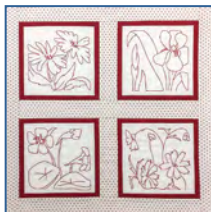
Barbara Eikmeier • Pop Up Booth

THU (#3023A) 8:00 - 10:30 AM
SAT (#3023C) 8:00 - 10:30 AM
EXPO HALL, PFAFF

Mimic the look of vintage redwork embroidery in a fraction of the time with straight stitch machine embroidery. Start with a pre-printed embroidery panel (animals/flowers) and use any straight-stitch sewing machine.

\$20 kit fee. All materials needed to complete four embroidered blocks; sashing and border fabric is not included.

Student Supplies. Basic sewing supplies



3024 Make a Fully-Lined Zipper Pouch with Faux Leather

Isabela Felix Cicero • Sewing and Design School

FRI (#3024B) 8:00 - 10:30 AM
SUN (#3024D) 8:00 - 10:30 AM
EXPO HALL, BROTHER

Learn how to make a super-cute fully-lined zipper pouch. You'll learn to successfully pair different materials (fabric and faux leather), install a zipper, and add finishing touches (zipper tabs) and a fun zipper pull.

\$15 kit fee. Fabrics and zipper

Student Supplies. Basic sewing supplies



3025 Anytime Table Runner

Sara Gallegos • Quality Sewing

THU (#3025A) 8:00 - 10:30 AM
SAT (#3025C) 8:00 - 10:30 AM
EXPO HALL, BABY LOCK

Cleverly constructed using the flatlock wave stitch, this table runner can be created for every season! This table runner is the perfect opportunity to learn a fun serger appliqué technique, experiment with decorative threads and a new stitch, and learn why and when to utilize specialty feet like the curve foot.

\$25 kit fee. Front/back fabric (differs from photo), batting, decorative thread

Student Supplies. Basic sewing supplies, thread snips, Wonder Clips



3026 Candy & Cork Zipper Pouch

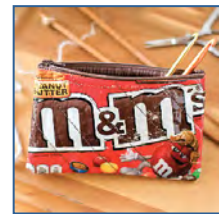
Sara Gallegos • Quality Sewing

FRI (#3026B) 8:00 - 10:30 AM
SUN (#3026D) 8:00 - 10:30 AM
EXPO HALL, BABY LOCK

Candy bags come in so many fun colors and sizes—why throw them out? Turn those bags into custom gift pouches, perfect for any occasion. In this class, we'll use the cording foot for zipper installation, learn the benefits of a Teflon foot, and more!

\$15 kit fee. Fabric for front, back & lining, fusible vinyl, zipper, and threads

Student Supplies. Thread snips, Wonder Clips



3027 Basic Singer Featherweight Maintenance

Darlene Girtan • Pop Up Booth

FRI (#3027B) 2:00 - 4:30 PM
PAVILION, THEATER 1

This basic maintenance class will help your working Singer Featherweight run faster, quieter, and longer. We will replace some basic parts and oil and lubricate all factory-directed areas. These basic services will keep her stitching in tip-top shape, and you'll learn how to keep your Featherweight going for years to come. Don't forget to bring your Featherweight 221/222!

\$65 kit fee. Singer Service Manual, oil drip pan, belt, LED lightbulb, cleaning tool, oil, grease, bobbin tension tester, spool disk and spring, new bed cushions

Student Supplies. Old towel, apron or "work clothes", flashlight, sewing supplies, clean microfiber cloth, flathead screwdrivers, your running antique Singer 221/222



•• 3028 Button Box Quilt

Nancy Goldsworthy • PerfectBorders.com

THU (#3028A) 2:00 - 4:30 PM

SAT (#3028C) 2:00 - 4:30 PM

EXPO HALL, BROTHER



This cute quilt is easy enough for a beginner, fast enough for a charity quilt, and fun for all skill levels. It can start with a jelly roll or strips from your stash. The class kit is completely pre-cut! We'll have seven setting options for your finished blocks, and children 10 and older are welcome in class. Sewing machine experience is necessary.

\$45 kit fee. Fabrics to complete the blocks, pattern with seven finishing options, thread, sewing needle, and prewound bobbin

\$15 kit fee (Saturday only: Bring your own jelly roll). Other kit contents as above.

Student Supplies. Basic sewing supplies

3029 Garden Friends

Nancy Goldsworthy • PerfectBorders.com

SAT (#3029C) 11:00 AM - 1:30 PM

EXPO HALL, BROTHER



This cute little wall hanging is a great introduction to paper piecing. The kit comes with everything you need to finish your project, and it's pre-cut and ready to sew! For those of you who hate ripping out the paper on your finished project, you can choose the option to not sew through the paper. The results are accurate either way.

\$40 kit fee. Pattern, extra instructional sheet, pre-cut fabrics, piecing thread, machine needle, ruler, and prewound bobbin

Student Supplies. Basic sewing supplies

•• 3030 Primitive Rug Hooking - Mug Rug

Robin Halliday • The Quilted Trillium

THU (#3030A) 2:00 - 4:30 PM

SAT (#3030C) 11:00 AM - 1:30 PM

FAIR VIEW, 2ND FLOOR



This beginner's rug hooking class will teach introductory skills & techniques for students to successfully complete a mug rug and determine if they love this fun craft—in an affordable way. Students will have multiple designs to choose from.

\$40 kit fee. Design for 5" x 5" mug rug project, wool noodles in a variety of colors, 7" Morgan hoop, Moshimer primitive rug hook, tulle netting for tracing pattern, and 12" square of monkscloth foundation

Student Supplies. Scissors, painter's tape, regular Sharpie

3031 Fast & Fun Fat Quarter Storage Containers

Lois Hallock • Your Perfect Quilting Space/
Clearview Designs

SAT (#3031C) 11:00 AM - 1:30 PM

EXPO HALL, PFAFF



Let your fabric stash help you get organized! Use your fabric to make pretty fat quarter storage containers that fit in drawers and on bookshelves. After you learn the techniques in this class, you can modify the dimensions to make many sizes of storage containers to fit your spaces and organizing needs. These make great gifts, too.

\$20 kit fee. ½ yard of double-sided fusible foam, Fat Quarter Storage box pattern, 10 mini Wonder Clips

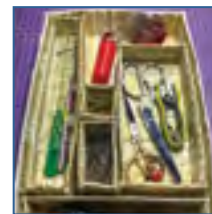
Student Supplies. Basic sewing supplies, ½ yard of striped fabric, ½ yard of matching fabric, ¼ yard of binding fabric, matching threads.

3032 Sewing Drawer Organizer Make & Take

Lois Hallock • Your Perfect Quilting Space/
Clearview Designs

FRI (#3032C) 8:00 - 10:30 AM

EXPO HALL, PFAFF



Make an organizer for your sewing drawer—out of fabric! Use pretty fabric with double-sided fusible foam to make a variety of compartments for storing supplies at your sewing machine. Learn the simple technique and take home a finished project. These make fabulous gifts and can be adapted for other storage purposes. This is an addictive and satisfying project.

\$20 kit fee. ½ yard of double sided fusible foam, drawer organizer pattern, 10 mini Wonder Clips

Student Supplies. Basic sewing supplies, ½ yard of striped fabric, ½ yard of matching fabric, matching thread, and marking pencil

3033 There's More to Sleeves Than Meets the "EYE"

Lorraine Henry • Lorraine Henry/Two Easy
Tape Company

FRI (#3033B) 8:00 - 10:30 AM

EXPO HALL, VIKING



Armscopye, that is! Fitting arms and sleeves is hard—some arms are heavier in back, some need more room in front. The standard cap shapes may not be the best fit for many people, and there are so many length and width differences. We'll learn correct measuring techniques and 11 different figure variations that affect sleeve comfort. You'll practice on half-scale garments and watch a demo, then sew in the sleeve. You'll also be taught a dressmaker's secret at the end.

\$10 kit fee. Muslin sleeve with bodice parts, practice patterns, information sheets, and page protectors

Student Supplies. Paper scissors, pencil, small ruler, and fine sewing pins

3034 Add an Inside Zipper Pocket to Any Bag or Purse

Erin Hentzel • Avery Lane Designs

THU (#3034A) 2:00 - 4:30 PM
EXPO HALL, VIKING

Do you love the idea of a zipper pocket inside your bag, but aren't sure where to start? This method makes it easy! Students will learn to sew a neat, pretty zipper pocket inside the 'Little Handbag with a Bow' purse from the instructor's new book, "Me & My 18" Doll." The technique can be used inside any purse pattern, and added to the outside of many bag patterns.

\$20 kit fee. Zipper, pre-cut lining and pocket fabric, glue stick or wonder tape, and thread. Purchase "Me & My 18" Doll" book (+\$20).

Student Supplies. Seam ripper, fabric marking tool, 6" acrylic ruler, scissors. Optional: Small thread snips



3035 Make a Trendy Knit Skirt for YOU!

Erin Hentzel • Avery Lane Designs

SUN (#3035D) 11:00 AM - 1:30 PM
EXPO HALL, VIKING

Sewing comfy knit garments can be easy and fun! In this introductory class, kids ages 10+ can build on their sewing skills and make a stylish and comfortable garment. Erin will pre-cut the fabric so you can focus on sewing technique. This modern A-line skirt is a hit with students of all ages, and you'll want to make one in all your favorite colors! You'll receive instructions to send the teacher your size before the class.

\$30 (\$38 for L and XL sizes) kit fee. Pre-washed designer knit fabric, elastic, and thread

Student Supplies. Basic sewing supplies, Schmetz stretch needles (size 75/11)



3036 Trendy Mini Skirt or Messenger Bag for 18" Dolls

Erin Hentzel • Avery Lane Designs

SAT (#3036C) 11:00 AM - 1:30 PM
EXPO HALL, VIKING

Kids 8 and older can learn to sew a trendy mini skirt for their 18" dolls. We'll use the "Sew in Style" book in this introductory class. Students will learn to cut out fabric pieces and follow a pattern, and basic sewing machine operation. Advanced students can choose to make the messenger bag (additional \$3 for the kit).

\$32 kit fee. "Sew in Style - Make Your Own Doll Clothes" book (retail \$22.95)*, fat quarter of quilting cotton, thread, and hook and loop tape. Messenger bag kit (+\$3) includes an additional fat quarter.
***Note:** Kit is discounted (-\$23) if you bring your own copy of "Sew in Style".

Student Supplies. Basic sewing supplies, pins, and sewing scissors. Hand sewing needle required for messenger bag.



3037 Sew the Seattle Shirt Pattern

Heidi Hilmerson • So Sew English Fabrics

THU (#3037A) 2:00 - 4:30 PM
SAT (#3037C) 11:00 AM - 1:30 PM
EXPO HALL, BABY LOCK

We'll walk you through sewing the Seattle Shirt step-by-step. The Seattle Shirt is a PDF pattern offered by So Sew English. You'll be using a serger to sew this essential, comfortable and trendy shirt from start to finish.

\$17 kit fee. Seattle Shirt PDF pattern, two yards of a solid bamboo fabric



3038 Wool Penny Sampler Project

Charisma Horton • Charisma's Corner

THU (#3038A) 11:00 AM - 1:30 PM
FRI (#3038B) 11:00 AM - 1:30 PM
FAIR VIEW, 1ST FLOOR

SAT (#3038C) 2:00 - 4:30 PM
PAVILION, THEATER 2

Discover the art of decorating wool pennies with different types of hand embroidery stitches. Combine several stitches and make a beautiful sampler using different threads and embellishments. We will discuss different needles and threads to use to enhance your stitching.

\$20 kit fee. Linen, wool pennies, needles, batting for stabilizer, and a wool glue stick

Student Supplies. Basic sewing supplies, embroidery hoop, and a variety of DMC floss and Perle cottons



3039 Pleather Handbag Sewing Techniques

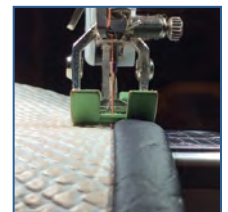
Cheryl Kuczek • Paradiso Designs

SUN (#3039D) 8:00 - 10:30 AM
EXPO HALL, VIKING

Learn to sew pleather or faux leather with confidence to enhance your handbag creations. There are many different types and grades of pleather. Cheryl will share her pleather sewing techniques and how to identify the correct pleather to use for your bag body and straps. Learn the basics of cutting pleather, the correct thread tension and best stitch length, and which sewing needles to use.

\$20 kit fee. Pleather sewing guide, pleather and fleece/muslin required for bag, extra pleather pieces to use in future projects, different pieces to compare and test sew

Student Supplies. Basic sewing supplies, small mat for sewing station, roller chalk marker, 1" x 6" clear ruler, and thread nips



3040 Find Your Van Gogh

Debbi Lashbrook • Bernina

THU (#3040A) 8:00 - 10:30 AM

SAT (#3040C) 8:00 - 10:30 AM

EXPO HALL, BERNINA



If Van Gogh only had a sewing machine to paint with, who knows what could have been created? Yes, you can paint on a sewing machine with Bernina's PaintWork tool to create your own wall art. After painting the fabric, embellish your artwork with the stitch regulator to add free-motion outlines to your creation, then bind the art to finish your project.

\$15 kit fee. Fabric, backing, batting, thread, paint pens for painting design, and stabilizer

Student Supplies. Basic sewing supplies, binding clips.

3041 Quilted Art Bag

Debbi Lashbrook • Bernina

FRI (#3041B) 8:00 - 10:30 AM

EXPO HALL, BERNINA

Imagine perfectly spaced echo quilting, creative text opportunities, and easy zipper insertion with a touch of a button! It is within your reach through embroidery, created entirely in the embroidery hoop. Experience this PHD (Push Here, Dear) session to see how easy it is.

\$20 kit fee. Fabric, batting, stabilizer, thread, zipper, and Wonder Tape

Student Supplies. Basic sewing supplies



3042 Adding Pizzazz to your Patterns

Susan Lazear • Cochenille Design Studio

FRI (#3042B) 2:00 - 4:30 PM

PAVILION, THEATER 2

SUN (#3042D) 11:00 AM - 1:30 PM

MOVED • SHOWPLEX, ROOM B



Learn a few pattern making techniques that can help you transform one garment style into another. You'll work with ¼-scale basic patterns and learn how to add flare, create asymmetrical fronts, add a collar, alter an armhole style, and other techniques. You will slash, spread, tape, and create, then realize it doesn't take much to add your unique touch to a pattern.

\$5 kit fee. Manilla quarter-scale pattern, adhesive tape roller, paper, inspiration images, and a handout

Student Supplies. Paper scissors, ruler, French curve, pencil, and measuring tape

3043 Flat Lock Bed Linens on the Serger

Pamela Leggett • Pamela's Patterns LLC & Palmer/Pletsch

FRI (#3043B) 2:00 - 4:30 PM

EXPO HALL, BABY LOCK



Decorate your guest room with the look of a quaint bed and breakfast. This beautiful pillowcase combines high-quality linen, vintage inspired Venetian laces, ribbon, and tasteful flatlock stitching to create a decorative accent that will flatter any bed. You'll be amazed at how many ways there are to use the flatlock stitch—and how different it can look. This is one versatile stitch!

\$25 kit fee. Linen, two types of Venetian lace, machine embroidery thread, ribbon, and color handouts

Student Supplies. Basic sewing supplies

3044 Heirloom Serging — Bolster Pillow

Pamela Leggett • Pamela's Patterns LLC & Palmer/Pletsch

THU (#3044A) 11:00 AM - 1:30 PM

SAT (#3044C) 2:00 - 4:30 PM

EXPO HALL, BABY LOCK



Heirloom looks are back and seen prominently in children's wear, women's wear and home decor. The techniques are time consuming when done on the sewing machine, but very fast—and easily accomplished—on the serger! Try some of the best heirloom serger stitches, including pintucks, lace, and insertions. Finish the look with a rolled hem edged gathered ruffle for a lovely accent pillow.

\$25 kit fee. Victorian cotton batiste, lace insertion, embroidered lace insertion, beading lace, ribbon, and a color handout

Student Supplies. Basic sewing supplies

3045 Anastasia Bracelet

Amy Loh Kuser • i-bead.com/i-stitch.com

THU (#3045A) 11:00 AM - 1:30 PM

SAT (#3045C) 8:00 - 10:30 AM

FAIR VIEW, 2ND FLOOR



If you've been wanting to learn to bead, here's your chance. This is an easy bracelet with simple repeats that creates an elegant design. Go home with new jewelry and learn the lingo! Once you've made the one in class, you'll be able to find the components at your local craft store or online. This pattern also makes great matching earrings and a simple pendant. Choose from a rainbow of colors. Makes up to a 9 ½" bracelet.

\$28 kit fee. Detailed step-by-step instructions, two colors of Czech twin beads, size 8/0 and 11/0 seed beads, snap clasp, beading mat, 6 lb. Fireline, and a size 10 beading needle

Student Supplies. Portable light, reading glasses or magnifier if used at home, and snips for the Fireline (do not use your good scissors)

3046 Delilah Necklace

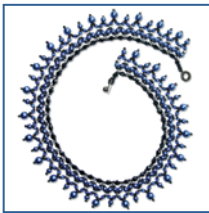
Amy Loh Kusper • i-bead.com/i-stitch.com

FRI (#3046B) 8:00 - 10:30 AM
PAVILION, THEATER 2

Create this lovely necklace with the soft glow of Czech Glass Pearls, Czech Fire Polish Crystals, and seed beads. This is a wonderful necklace if you are allergic to metal—it is all glass except the clasp, and you can substitute an elegant glass button for the metal clasp. Using a centuries-old technique, you'll be able to make this necklace your exact size! Choose from a rainbow of colors. Makes up to an 18" necklace.

\$38 kit fee. Detailed instructions, 4 mm & 6 mm Czech Glass Pearls, 4 mm Fire Polish Crystals, two colors of size 8/0 seed beads, size 11/0 seed beads, snap clasp, beading mat, 6 lb. Fireline, size 10 beading needle, bead mat

Student Supplies. Portable light, reading or magnifying glasses for close work if used at home, and snips for Fireline (*do not* use your good scissors)



3047 Learn to Sew: Waxed Canvas and Leather Portsmouth Tote

Ellie Lum • Janome

THU (#3047A) 2:00 - 4:30 PM
SAT (#3047C) 2:00 - 4:30 PM
SHOWPLEX, JANOME

This tote was designed with you in mind—it's a beginner-friendly bag with an amazing payoff. In just a couple of hours, you'll go home with a trendy tote made by hand, glean indispensable bag sewing tips for handling heavy duty fabric, and learn how to attach leather handles.

\$50 kit fee. One main tote body (10-12 oz waxed canvas piece), one tote base (10-12 oz waxed canvas piece), two ¾" x 28" 6-8 oz. leather tote straps, eight metal double-cap rivets, one ¾" metal D-ring, one sew-in "I MADE THIS" label

Student Supplies. Basic sewing supplies, Jeans 100 Needle; Optional: 24" x 36" quilting ruler, craft clips, flowerhead pins, and edge stitch presser foot



3048 Crazy Kaleidoscope Quilting

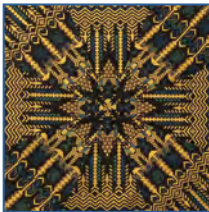
Julie Luoma • Off The Wall Quilt

FRI (#3048B) 11:00 AM - 1:30 PM
EXPO HALL, PFAFF

Using a simple template method, we will create kaleidoscope blocks to then use to mix and match and stir up all sorts of chaos. Your wildest fabric prints can become incredibly unique works of art. Each student should be able to make at least two complete blocks.

\$30 kit fee. Set of two kaleidoscope templates, 1 yard of fabric

Student Supplies. Basic sewing supplies.



3049 Add Art with Serger Texture

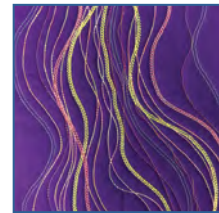
Linda McGehee • BoNash

FRI (#3049B) 11:00 AM - 1:30 PM
EXPO HALL, BABY LOCK

Once upon a time, sergers were used to finish seams or for utility sewing. Today, the serger is a fantastic machine for embellishments, resulting in a variety of textures only the serger can do. Using a range of heavier and decorative threads, discover how easy it is to create works of art on a garment, wall hanging, pillow or handbag. Once the basics are down, add imagination for limitless results!

\$15 kit fee. 4 spools of different threads (Filaine, Blendables #12 & #30), fabric, stabilizer, zipper, and instructions

Student Supplies. Basic sewing supplies



3050 It's a Mystery

Linda McGehee • BoNash

THU (#3050A) 11:00 AM - 1:30 PM
EXPO HALL, BERNINA
SAT (#3050C) 8:00 - 10:30 AM
EXPO HALL, BROTHER

Linda has taught Mystery Classes for several years with huge success—they fill up fast! Your only clues: There will be at least one zipper, there will be multiple projects, and all will be completed in the class. Yes, it is possible to complete nice, usable projects in a short time. Walk out of class with three finished projects. You'll be surprised.

\$25 kit fee. Fabric, thread, needle, zipper, notions, and instructions for three projects

Student Supplies. Basic sewing supplies



•• 3051 Owl Stuffed Animal

Sheila McKay • McKay Manor Musers

SUN (#3051D) 11:00 AM - 1:30 PM
EXPO HALL, PFAFF

You'll learn all the tips and tricks to sewing with soft Cuddle fabrics as you make a fun little owl stuffed animal. This is the perfect opportunity to bring a child to enjoy the experience with you, and take home a new plush friend.

\$15 kit fee. Full color pattern, including instructions and pattern pieces for three different sizes in a selection of colors/fabrics

Student Supplies. Basic sewing supplies, one sheet of Steam-A-Seam Light 2 or Wonder Under fusible web, scissors, beige or grey thread, seam ripper, long pins with big heads or Clover Clips, one bag of polyester stuffing



3052 So Soft Suede Bottom Slippers

Sheila McKay • McKay Manor Musers

FRI (#3052B) 2:00 - 4:30 PM
EXPO HALL, BROTHUR

It's cold and dreary in the Pacific Northwest – you can make a pair of snugly soft slippers for you or for a little one in your life. These are made with only two pattern pieces, so it is really easy! There are lots of colors and fabrics and styles to choose from in the kits.

\$15 kit fee. Full color pattern with sizes for kids and adults, suede and cuddle fabrics in a selection of colors/fabrics

Student Supplies. Basic sewing supplies, basic color thread, seam ripper, long pins with big heads or Clover Wonder Clips



3053 Traditional Native American Moccasins

Linda McLean • Washington State University

SUN (#3053D) 11:00 AM - 1:30 PM
SHOWPLEX, JANOME

Learn how to create traditional Native American footwear! Participate in hands-on learning as a tribal member explains the process for drafting a pattern and creating moccasins. You will learn about one of the many types of Native American footwear used by tribes across the Pacific Northwest.

\$15 kit fee. Pattern, fabric, needle, thread, paper

Student Supplies. Scissors, pencils, thimble (optional)



3054 Upcycle Your Wardrobe

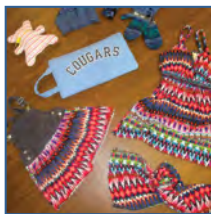
Linda McLean • Washington State University

SAT (#3054C) 2:00 - 4:30 PM
FAIR VIEW, 1ST FLOOR

Kids and teens can create upcycled fashion items in this hands-on class! Turn your salvaged items from trash into treasure that's exactly YOUR taste, with quick, easy, and economical creative tips. You'll learn how to add sparkle to garments, new tying methods for shirts and how to convert a beloved T-shirt into a trendy new scarf.

\$10 kit fee. Access to an assortment of supplies and embellishments, including glue guns, jewel setter, and assorted garments

Student Supplies. T-Shirt or sweatshirt to repurpose, basic sewing supplies



3055 From Thread to Lace

Carol Mesimer • Clover Needlcraft

FRI (#3055B) 2:00 - 4:30 PM
FAIR VIEW, 2ND FLOOR

SUN (#3055D) 11:00 AM - 1:30 PM
PAVILION, THEATER 2

Taking the mystery out of tatting is easier than you imagined. There's only one two-step knot used to make this intricate lacework. Students will learn how to make chains, rings and read modern patterns.

\$1 kit fee. Shuttle pre-wound with 5 yards of Lizbeth tatting thread, extra 5 yards Lizbeth tatting thread. Thread colors will vary.

Student Supplies. Scissors, pen or pencil, notepad, and small size 12 steel crochet hook



3056 Pop the Cork! Sew a Project Tote

Annette Millard • Social Media Lounge

SAT (#3056C) 2:00 - 4:30 PM
EXPO HALL, PFAFF

Cork fabric? Yes, please! Durable, waterproof and non-fraying, cork fabric is a trendy, fabulous alternative to leather! Perfect for totes, bags and pouches, sewing with cork fabric is fun and easy on any sewing machine. Using just a few tips and supplies, you'll make a small project tote with professional results and see lots of inspiration for more ways to add cork to your sewing designs.

\$25 kit fee. Fabric for tote and lining, stabilizer, pre-cut cork fabric, coordinating thread, sewing machine needle

Student Supplies. Basic sewing supplies, thread snips



3057 Introduction to English Paper Piecing

Shannon & Jason Mullett-Bowlsby •
Artisan Space/The Shibaguyz

THU (#3057A) 8:00 - 10:30 AM
FAIR VIEW, 2ND FLOOR

SAT (#3057C) 8:00 - 10:30 AM
PAVILION, THEATER 1

If you've ever dreamt of putting together beautiful pieces of fabric to create heirloom quilts, throws, baby blankets, pillows, or appliqué, this is the class for you. Join the slow stitching movement and learn the art of English Paper Piecing. No sewing or quilting experience necessary! Beginners and curious crafters highly encouraged.

\$10 kit fee. Fabric, quilting needle (#9 or #10), Aurifil 50wt cotton thread, pre-cut paper templates, glue stick, hexagon templates, and Clover Wonder Clips

Student Supplies. Basic sewing supplies



3058 Visible Mending in the Modern World

Shannon & Jason Mullett-Bowlsby •
Artisan Space/The Shibaguyz

FRI (#3058B) 8:00 - 10:30 AM
FAIR VIEW, 2ND FLOOR
SUN (#3058D) 8:00 - 10:30 AM
PAVILION, THEATER 1



Moth holes in your favorite sweater, rip in a comfy pair of jeans, tore your jacket getting out of the car? Take these and turn them into one-of-a-kind acts of creation. With sustainable fashion at the forefront of everyone's minds, visible mending is one of the hottest trends in the fashion world. Why buy new, when you can fix up the old and make a one-of-a-kind treasure?

Student Supplies. Basic sewing supplies

3059 Adjustments for a Beautiful Bust

Laura Nash • Sew Chic Pattern Co.

THU (#3059A) 11:00 AM - 1:30 PM
PAVILION, THEATER 2



Whether large, small, or in between, this class is all about achieving a beautifully fitted bust. We'll work step by step to determine how to measure, calculate, and execute the best two methods of bust alteration. Practice with a variety of style types in half-scale, discovering how to eliminate neckline and armhole gaping, move darts, and more to create the shaping your bust line deserves.

\$20 kit fee. Instruction booklet, pattern paper, half-scale curved ruler, four practice half-scale patterns

Student Supplies. Mechanical pencil, magic tape, C-Thru grid ruler, and paper scissors

3060 Intro to the Dressmaker's Glove for Women

Laura Nash • Sew Chic Pattern Co.

SAT (#3060C) 11:00 AM - 1:30 PM
PAVILION, THEATER 2



Accessories make an extraordinary difference when putting together a special ensemble or costume. Though glove making has a long (and protected) history, dressmakers can still whip up a pair of adorable matching gloves to finish off a vintage or modern look. Learn tips for choosing fabrics, easiest methods for hand fitting, glove cutting, and assembly. Sizing for 6.5 - 7.5" hand across the knuckles.

\$35 kit fee. 2/3 yards of quality white woven taffeta; 2 patterns with instructions (one to cut, one to save)

Student Supplies. Basic sewing supplies, portable light, contrast quilting thread, thimble, C-Thru grid ruler, magic transparent tape, mechanical pencil, sewing needle

3061 What Needle Do I Use? Exploratory Hands-On Class

Rhonda Pierce • Social Media Lounge

THU (#3061A) 11:00 AM - 1:30 PM
SAT (#3061C) 2:00 - 4:30 PM
EXPO HALL, VIKING



We'll use stitch exercises to demonstrate how sewing machine needles, thread, technique and you, the sewist, control stitch quality. You'll stitch with a variety of fabrics and needles, along with a few surprises illustrating the importance of needle selection. You will gain an elevated respect for the sewing machine needle and more confidence in your needle selection. This is a fun, hands-on exploratory class.

\$5 kit fee. SCHMETZ needles, thread, and gifts

Student Supplies. Basic sewing supplies

• 3062 Dragon Boat Decorations – Magic with Ribbon

Marilyn Romatka • Taproot Folk Arts, LLC

THU (#3062A) 2:00 - 4:30 PM
PAVILION, THEATER 1
SAT (#3062C) 11:00 AM - 1:30 PM
FAIR VIEW, 1ST FLOOR



These geometric gems are hand-crafted in China, filled with insect-repelling herbs, and hung during the Dragon Boat Festival in the hot fifth month of the lunar calendar. We will fill our sachets with dried lavender, or whatever other herb the student wishes to bring. This is a simple technique that gives exquisite results! We will finish two sachets in class.

\$20 kit fee. Color handout, winding base, ribbon for two sachets, decorative pins, tassels, glue/tape, and lavender

Student Supplies. Sharp sewing snips

• 3063 Chicken Scratch Sampler

Cindy Rowell • Wonderfil Speciality Threads

SUN (#3063D) 8:00 - 10:30 AM
PAVILION, THEATER 2



Don't be "chicken" to try your hand at Chicken Scratch. It is also known as Depression Lace, Gingham Lace, Tic Tac Toe Embroidery, Norwegian Embroidery, Snowflake Embroidery, Broderie Suisse, Australian Cross Stitch, or Amish Embroidery. It is a combination of cross stitch, simple embroidery stitches and needle weaving. Stitches are worked on gingham fabric to create beautiful lace effects.

\$20 kit fee. Instructions for beginner and intermediate stitching, two different needles, Gingham fabric, threads

Student Supplies. 8" embroidery hoop, glasses if you need them

3064 More To Explore In Beaded Buttons

Cindy Rowell • Wonderfil Speciality Threads

THU (#3064A) 8:00 - 10:30 AM
FAIR VIEW, 1ST FLOOR

Cindy is back with new ways to create one-of-a-kind beaded buttons. In this hands-on class, she will share three different ways to create unique designer beaded buttons, including her original ideas and some simple beading techniques. If you can hold a needle and thread, you are on your way to exploring this exciting wardrobe accent.

\$20 kit fee. Instructional handout, fabric and ultrasuede to cover buttons, beading needle, thread, a variety of beads and crystals, and three different types and sizes of covered buttons



3065 Thread Art Cards

Cindy Rowell • Wonderfil Speciality Threads

SAT (#3065C) 8:00 - 10:30 AM
PAVILION, THEATER 2

Learn a creative new way to incorporate basic hand embroidery stitching for an elegant work of art. Using a variety of WonderFil Specialty threads, you will learn to create a card using this easy technique. The pattern is outlined on cardstock by piercing small holes to form a stitching guide, and embroidery stitches & bead embellishments create intricate thread stitched designs.

\$20 kit fee. All supplies needed for three cards, basic (beginner) technique instruction guide, pattern stitching guide, three pre-punched cards, piercing tool, three types of specialty threads, crystals and beads.

Student Supplies. Small scissors, reading glasses or magnifying glasses (if needed for close work)



3066 Awesome Athleisure: Wear it Anywhere

Kathy Ruddy • kathyruddy.com

THU (#3066A) 2:00 - 4:30 PM
PAVILION, THEATER 2

Athleisure, yoga leggings and tops are now part of our everyday wardrobes, and they're really fun to sew. Kathy, an experienced fitter, will show you how pick and size patterns for negative ease, resource fabrics, and seaming techniques. Learn to customize garments you already own by adding details like pockets and zippers to hold your smart phone and other must-carries.

\$25 kit fee. Seam allowance curve ruler, drafting pen, practice patterns, and tutorial

Student Supplies. Paper scissors, Scotch tape, four sheets of printer paper



3067 A Hooked House Ornament

Darlene Sabo • Olympic Wool Works

THU (#3067A) 2:00 - 4:30 PM
FAIR VIEW, 2ND FLOOR

SAT (#3067B) 2:00 - 4:30 PM
FAIR VIEW, 2ND FLOOR



3068 A Proddy Wool Sunflower

Darlene Sabo • Olympic Wool Works

FRI (#3068B) 11:00 AM - 1:30 PM
FAIR VIEW, 2ND FLOOR

CANCELLED



3069 Beginning Sashiko Sampler

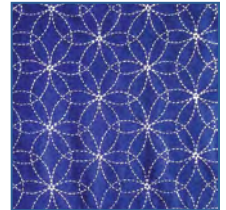
Becky Scellato • Shibori Dragon

THU (#3069A) 11:00 AM - 1:30 PM
PAVILION, THEATER 1

If you've wanted to learn sashiko but don't know where to start, this class is for you. You'll learn the basics as you work on a preprinted sashiko sampler that can be used for a pillow, wall hanging, or quilt square. Learn about different types of threads, needles, and how to transfer sashiko designs.

\$35 kit fee. Pre-printed 13" x 13" sashiko sampler, thread, needles, and handouts

Student Supplies. Scissors for cutting thread, needle threader for thicker threads (optional)



3070 Sashiko Drawstring Bag

Becky Scellato • Shibori Dragon

FRI (#3070B) 11:00 AM - 1:30 PM
PAVILION, THEATER 1

You'll create a simple lined cotton drawstring bag, used for a variety of occasions in Japan. Use your bag to carry your sewing or sashiko supplies. Students will learn how to transfer the sashiko design to the fabric using stencils and templates, sashiko stitch the design in class, and receive instructions for sewing and completing the bag at home.

\$35 kit fee. Fabric for bag and lining, cording, sashiko thread and needle, transfer paper, sashiko design templates, and handouts

Student Supplies. Scissors, ball point pen, white wash out marking pen and pencil, straight pins, 12" ruler. Optional: Needle threader



3071 Yazzii Bag Meets Boro & Sashiko

Becky Scellato • Shibori Dragon

SAT (#3071C) 11:00 AM - 1:30 PM
PAVILION, THEATER 1

Receive a Yazzii Craft Bag to embellish with sashiko stitching, Japanese fabric patchwork, or both! Learn to transfer a sashiko design from the stencil provided and do basic sashiko stitching or add various Japanese fabrics and create a boro-inspired patchwork. The Yazzii Craft Bag is perfect for carrying your sashiko or other sewing supplies.

\$45 kit fee. Yazzii Craft Bag, a selection of various Japanese fabrics, stencil, sashiko thread, needle, and handouts

Student Supplies. Scissors for fabric and thread cutting, wash-out marking pen or pencil, glue stick, and straight pins. Optional: thimble, needle threader



3072 Don't be in a "Bind"

Connie Spurlock • Sew Wonderful Dreams

THU (#3072A) 8:00 - 10:30 AM
FRI (#3072B) 11:00 AM - 1:30 PM
EXPO HALL, VIKING



This hands-on workshop will dispel the horrors of binding. We will cover five techniques, including strip binding, bias binding (learn to make continuous bias binding), prairie points, and ruffles as a finished edge. It will be fun and easy for you to practice the ins and outs of binding techniques.

\$25 kit fee. Written instructions and fabrics for five binding techniques and projects.

Student Supplies. Basic sewing supplies, 1 fat quarter

3073 Not Your Grandmother's Lace

Joyce Teng • TSC Designs

THU (#3073A) 8:00 - 10:30 AM
PAVILION, THEATER 1



Lace motifs, trims and fabric take on new life when colored with vibrant Tsukeniko fabric inks and Fabrico markers. Whether your lace is vintage or new, its colorful focus will add dimension to your quilts, embellish your clothing creations, and enhance your mixed media art pieces. Create stunning backgrounds or use the lace as a stencil!

\$30 kit fee. Assortment of fabric blocks and lace, 2 sizes of Fantastix tips, a water brush pen, squeegee, assorted dabber sizes, ink droppers, spray bottle, one Tsukineko All-Purpose Ink, TSC Design stencil, and a tidy tray (corrected Jan. 21, 2020)

Student Supplies. Masking tape or painter's tape, paper towels, four pieces of 6" x 6" white cotton fabric, two pieces of 3" x 22" white-on-white print fabric, one piece of 13" x 13" white cotton fabric, one piece 13" x 13" black cotton fabric, can of shaving cream (foam Barbasol works best), brown paper lunch bag, 2 oz. spray bottle 1/3 full of 90% alcohol

3074 Ocean Odyssey

Joyce Teng • TSC Designs

FRI (#3074B) 8:00 - 10:30 AM
PAVILION, THEATER 1



Create a dreamy underwater world using vibrant Tsukeniko fabric inks and the new versatile AquaFlo brushes. You'll learn innovative ways to produce watercolor effects for cloudy skies, luscious landscapes and flowing water. Add details and character with stencils, sponges and markers. Your custom art pieces will rise to new heights with variety of media such as water, alcohol and even shaving cream.

\$30 kit fee. Assortment of fabric blocks and lace, 2 sizes of Fantastix tips, a water brush pen, squeegee, assorted dabber sizes, ink droppers, spray bottle, one Tsukineko All-Purpose Ink, TSC Design stencil, and a tidy tray

Student Supplies. Masking tape or painter's tape, paper towels, paper lunch bag, four pieces of 6" x 6" white cotton fabric, two pieces of 3" x 22" white-on-white print fabric, two pieces of 13" x 14" white cotton fabric, shaving cream (Barbasol foam works best), small clear spray bottle 1/3 full of 91% isopropyl rubbing alcohol

3075 Sew Knits with Confidence

Katrina Walker • Pfaff/Quality Sewing

FRI (#3075B) 2:00 - 4:30 PM
EXPO HALL, PFAFF



No serger? No problem! Learn to easily and confidently sew knit fabrics of all kinds, from ponte to tissue jersey! From seams to hems, you'll learn and practice tricks and techniques for sewing these wonderful—but sometimes challenging—fabrics using a standard sewing machine. Participants will build a reference notebook with step-by-step samples of everything learned in class.

\$25 kit fee. Knit fabrics, notions, thread, needles, and reference notebook

Student Supplies. Basic sewing supplies

3076 Sew Like A Designer

Katrina Walker • Pfaff/Quality Sewing

SUN (#3076D) 8:00 - 10:30 AM
EXPO HALL, PFAFF



Beautiful designer sewing techniques made easy! Get a fabulous runway look by simply adding designer seaming and embellishments. In this hands-on class, you will learn to create beautiful looks using modern and vintage techniques. Be inspired by a trunk show of designer garments. You will build a detailed reference notebook with step-by-step samples.

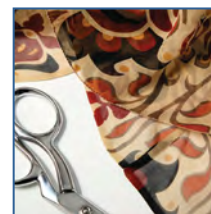
\$25 kit fee. Fabrics, notions, reference notebook, and specialty tool rental

Student Supplies. Basic sewing supplies

3077 Sewing with Silk

Katrina Walker • Pfaff/Quality Sewing

THU (#3077A) 11:00 AM - 1:30 PM
EXPO HALL, PFAFF



Sew silk with confidence! Learn about silk fabrics, preparing for piecing and sewing, how to sew specialty seams and seam finishes, tame shifty chiffon, and more. This entertaining and educational class is guaranteed to inspire and invigorate a passion for silk. Students will build a detailed reference notebook with hands-on samples of the fabrics and techniques learned in class.

\$25 kit fee. Silk fabrics, notions, threads, and other supplies, reference notebook, and rental of specialty tools

Student Supplies. Basic sewing supplies

3078 Dolly Swimsuit with Skirt & Beach Chair

Nadeen Ward • Dolls R SEW Fun

THU (#3078A) 8:00 - 10:30 AM
EXPO HALL, BROTHER

Swimsuit and performance fabrics can be overwhelming. Let's take the fear out of it and make a fun swimsuit for your 18" doll. We will work with two different elastic applications, then make a PVC pipe beach chair with a fabric sling seat. Learn to use new fabrics and materials, and keep your dolls cool in the summer!

\$30 kit fee. Pattern for both projects, precut swimsuit kit with elastics, PVC piping and fitting, serged sling chair fabric

Student Supplies. Basic sewing supplies



3079 Reversible and Ruffles for your 18" Doll

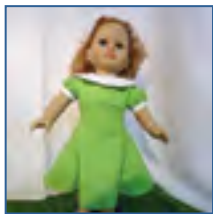
Nadeen Ward • Dolls R SEW Fun

SAT (#3079) 11:00 AM - 1:30 PM
EXPO HALL, BROTHER

Make a fun and fast outfit for your favorite 18" doll's spring and summer wardrobe! The reversible halter top showcases machine embroidery on one side and coordinating fabrics on the other. This top reads like a sleeveless shirt when worn. Bias cut front panels and ruffles on all the skirt's hemlines makes it a hit for any time of the year. A waistband with elastic inside makes fit perfectly.

\$30 kit fee. Pattern, pre-cut fabric pieces, completed embroidery on top, elastic for waistband, thread, and bobbin

Student Supplies. Basic sewing supplies, mini iron & ironing pad, pinking shears, point turner, bodkin and small scissors



3080 Quilt Piecing Fun at Highway Speed

Mech Watne • PerfectBorders.com

THU (#3080A) 8:00 - 10:30 AM
SAT (#3080C) 11:00 AM - 1:30 PM
SHOWPLEX, JANOME

Speed isn't everything, but why go slow when there is so much to see? Mech will be teaching easy, beginning strip piecing techniques that will allow you to speed up your piecing and get to more of your planned projects. From first cut to completion, this top took Mech three hours on her first pattern test. There is so much fun and beautiful fabric to play with!

\$5 kit fee. Pattern, handouts

Student Supplies. Basic sewing supplies, $\frac{2}{3}$ yard of two different fabrics, $1\frac{2}{3}$ yard of lattice fabric



3081 Beginning Needle Felting Workshop

Jennefer Marker • Compass Moon Creations

FRI (#3081B) 11:00 AM - 1:30 PM
FAIR VIEW, 2ND FLOOR

Have you checked out those adorable needle felted figurines online? Or seen unique appliques created on wool fabric by needle felting? Make your own! Needle felting is the process of turning a pile of fluffy wool into creative shapes and artistic designs. It's simple (and quick!) to create one-of-a-kind creations using a special barbed needle and a pile of fluffy wool.

\$20 kit fee. Wool, felting pad, and felting needles

Sewing & Stitchery
e·x·p·o

3082 *NEW* Beginning Patternmaking

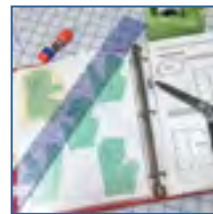
Katrina Walker • Kai Scissors

SAT (#3082C) 2:00 - 4:30 PM
FAIR VIEW, 2ND FLOOR

Learn how to design and create your own blouse and jacket styles using a basic pattern block. From fancy darts to princess seams, yokes, and other details - it's easier than you think! In this hands-on class, you'll practice creating a variety of styles from a basic pattern. You will create a detailed reference notebook of samples and techniques learned in class.

\$20 kit fee. Detailed reference notebook, pre-cut paper slopers, tracing paper, glue stick, and other materials needed for class

Student Supplies. Pencil with eraser, paper scissors, small clear ruler



3083 *NEW* "Known", Wool Penny Tree

Charisma Horton • Charisma's Corner

FRI (#3083) 11:00 AM - 1:30 PM
FAIR VIEW, 2ND FLOOR

"Known" is an embroidered tree embellished with wool pennies. Each wool penny is embroidered with a variety of stitches. Come learn different embroidery stitches while creating this folkart wall hanging.

\$35 kit fee. Fabrics for background (Essex linen), border and binding (kaffe), batting for the stabilizer, wool, a milliners size 1 needle, pattern

Student Supplies. Basic sewing supplies, embroidery hoop, thimble, and a variety of DMC floss and Perle cottons



Four Needle Classes

4 hours

\$50*

*Pre-registration is required.



Kit Fees

Kit fees are payable directly to the instructor at the beginning of your class; exact change is appreciated.

Basic Sewing Supplies

Fabric & paper scissors, pins, seam ripper, seam gauge, ruler, measuring tape, sewing needles, chalk, pencil.

Ironing stations and a limited number of rotary cutters and mats will be available for use in class.

4001 Sew a Double Gauze Top—It's Easier Than You Think

Teresa Coates • Dutch Quilters

WED (#4001) 1:00 - 5:00 PM
EXPO HALL, BABY LOCK

Double gauze is one of the hottest new trends in apparel, and one of the coolest to wear! Join Shannon Fabrics' educator Teresa Coates to learn how easy double gauze is to sew by making a Bondi Top (up to 4X). Learn the tools and techniques, and see just how comfortable it is to wear.

\$35 kit fee. Two yards of Embrace double gauze, pattern

Student Supplies. Basic sewing supplies



4003 Serger Sampler

Pamela Damour • The Decorating Diva

WED (#4003) 8:00 AM - 12:00 PM
EXPO HALL, BABY LOCK

Your serger can do so much more than finish seams. Learn how to make four different technique blocks, then decide how to use them, whether you prefer a pillow or a table runner. Learn to make pintucks, pleated windows, serger lace, ruching and piping.

\$25 kit fee. Pre-cut fabrics, trims and supplies to make four technique blocks



4004 It's Magic! Six Ways to Use the Magic Triangle Ruler

Barbara Eikmeier • Pop Up Booth

WED (#4004) 1:00 - 5:00 PM
EXPO HALL, PFAFF

Learn six things you can do with the Magic Triangle Ruler. Students will learn how to make units or blocks using the Magic Triangle Ruler, including Shaded Four Patch, Birds in the Air, Quarter Square Triangles, Half Square Triangles, Double Hour Glass, and other clever ruler applications for trimming and marking.

\$20 kit fee. Pre-cut fabric for all units

Student Supplies. Basic sewing supplies



4002 Playful Couture

Mary Collen • Bernina

SUN (#4002D) 8:00 AM - 12:00 PM
EXPO HALL, BERNINA

Play with fun free-motion techniques using the Bernina Stitch Regulator. Then add machine sashiko and explore other creative machine artistry and features. Create a cool, flexible piece that starts out flat for easy embellishing, then folds and buttons into a useful bag.

\$20 kit fee. Quilt sandwich for testing techniques, quilt sandwich for bag, pre-cut lining piece, fused to interfacing, webbing for strap with hardware, threads for project, buttons, needle

Student Supplies. Basic sewing supplies, fabric scissors, chalk marker



Four Needle Sessions (MACHINE SEWING)

WEDNESDAY

	Expo Hall Baby Lock	Expo Hall Bernina	Expo Hall Brother	Expo Hall Pfaff	Expo Hall Viking
8:00 TO 12:00	4003 Serger Sampler <i>Pamela Damour</i>	4010 Perfectly Packaged <i>Debbi Lashbrook</i>	4025 Learn to Sew: Fremont Tote <i>Ellie Lum</i>	4014 Hunter's Star the Marti Way <i>Marti Michell</i>	4007 Sew a Doll Dress <i>Erin Hentzel</i>
1:00 TO 5:00	4001 Sew a Double Gauze Top — It's Easier Than You Think <i>Teresa Coates</i>	4016 Improv Piecing <i>Shannon & Jason Mullett-Bowlsby</i>	4024 Create a Washington Wall Hanging <i>Coleen Swettman</i>	4004 It's Magic! Six Ways to Use the Magic Triangle Ruler <i>Barbara Eikmeier</i>	4013 Serengeti Shapes Pillow <i>Sheila McKay</i>

4005 Art Appliqué/Color Me Quilts

Desiree Habicht • Desiree's Designs

WED (#4005) 8:00 AM - 12:00 PM
PAULHAMUS, ROOM 4

Join a fun-filled class learning multiple techniques for applying colored pencils to fabric with amazing results. No artistic skill is required! Desiree will bring everything you need to create an appliqué look with colored pencils and more. You will have your choice of one pre-quilted block. Once finished, they are machine washable.

\$40 kit fee. One 8" x 8" pre-quilted block, five Inktense pencils, textile medium, set of six assorted paint brushes, medium container, and paper towels



4006 Pattern Alteration Boot Camp

Lorraine Henry • Lorraine Henry / Two Easy Tape Company

WED (#4006) 1:00 - 5:00 PM
PAULHAMUS, ROOM 4

Belly, Bust, Butt, and Back! Most of us have fitting issues with one or more of these areas. Learn the essential elements of pattern adjustment, including sizing, ease, and how to combine alteration methods for success. We'll use half scale patterns to practice in this hands on class, turning you into a "Sew Successful Seamstress."

\$15 kit fee. Binder with half scales patterns, backing paper, page protectors, and instruction sheets

Student Supplies. Small paper scissors, Scotch-type tape, straight pins, clear ruler, 10" x 12" foamboard or 1/4" thick cardboard



4007 Sew a Doll Dress

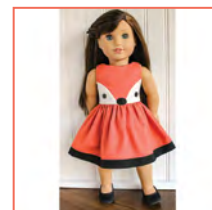
Erin Hentzel • Avery Lane Designs

WED (#4007) 8:00 AM - 12:00 PM
EXPO HALL, VIKING

Make this adorable Fiona Fox dress for 18" dolls, such as American Girl Dolls. This is the perfect class for confident beginners and experienced sewists alike! Learn some tricks to sewing small garments while making this modern dress.

\$25 kit fee. Avery Lane Fiona Fox Dress pattern, fabric, thread, ultra-thin Velcro®, and notions

Student Supplies. Basic sewing supplies, pinking shears, fabric marker, hand sewing needle



4008 Design Your Wardrobe with Five Pattern Pieces

Judy Kessinger • FitNice System

WED (#4008) 1:00 - 5:00 PM
PAULHAMUS, ROOM 1

Bring a picture of a garment you want to copy, and we'll learn how! Pick any basic top pattern and pants pattern and we'll make five pieces — front, back, sleeve, and two legs. You'll get instructions about how to send pictures to Judy at least three weeks before the class.

\$10 kit fee. Patterns for collars, ruffles and other quick designs, information about making your own facings

Student Supplies. Pencil and paper for notes



Four Needle Sessions (NO MACHINE)

WEDNESDAY



	Paulhamus Classroom 1	Paulhamus Classroom 2	Paulhamus Classroom 3	Paulhamus Classroom 4	Fair View 1st Floor	Fair View 2nd Floor
8:00 TO 12:00	4022 Pants for You! Personal Fit and Styling! <i>Kathy Ruddy</i>	4020 Couture Hand Beading on Fabric <i>Cindy Rowell</i>	4009 Vintage Silk Fusion <i>Cheryl Kuczek</i>	4005 Art Appliqué/Color Me Quilts <i>Desiree Habicht</i>	4017 Customize Your Size for Fit <i>Laura Nash</i>	4015 Boro: From Rags to Riches <i>Shannon & Jason Mullett-Bowlsby</i>
1:00 TO 5:00	4008 Design Your Wardrobe with Five Pattern Pieces <i>Judy Kessinger</i>	4021 The Art of Quilting with Memories <i>Cindy Rowell</i>	4017 Customize Your Size for Fit <i>Laura Nash</i>	4006 Pattern Alteration Boot Camp <i>Lorraine Henry</i>	4019 Kumihimo: Japanese Braiding <i>Marilyn Romatka</i>	4023 Surface Embellishment for Fashion <i>Susan Skalak</i>

SUNDAY

Expo Hall
Bernina

8:00 TO 12:00
4002 Playful Couture
Mary Collen



Fair View
2nd Floor

8:00 TO 2:00
4018 Beginning Inkle Loom Weaving
Marilyn Romatka

4009 Vintage Silk Fusion

Cheryl Kuczek • Paradiso Designs

WED (#4009) 8:00 AM - 12:00 PM
PAULHAMUS, ROOM 3

Create handmade art with vintage silk kimono embellished with lace and trims. Add texture with a shibori silk flower blossom and lovely yarn fiber stems ending in silk leaves! Finish with delicate embroidery stitches using shimmering vintage French silk threads. This is a very special hands-on class.

\$50 kit fee. Vintage kimono silk, shibori silk, vintage French embroidery thread, vintage lace, vintage trim, two yarns for embroidery, two spools of thread, Embroidery Layout Guide

Student Supplies. Basic sewing supplies, thread nips, scissors, seam ripper, fine silk pins (1 3/8"), chenille, milliners, sharps & embroidery needles



4010 Perfectly Packaged

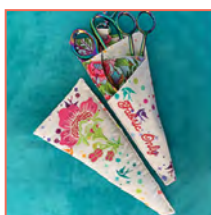
Debbi Lashbrook • Bernina

WED (#4010) 8:00 AM - 12:00 PM
EXPO HALL, BERNINA

Discover the wonderful world of embroidery while creating an in-the-hoop scissor case to keep your favorite pair of scissors safe and secure.

\$20 kit fee. Fabric, batting, backing, thread, stabilizer

Student Supplies. Basic sewing supplies



4011 Mixed Media: Combining Knit/Crochet with Fabrics

Susan Lazear • Design Studio

WED (#4011) 8:00 AM - 12:00 PM
EXPO HALL, BROTHER

CANCELLED

4012 All-in-One Stitches Companion

Amy Loh Kuser • i-bead.com / i-stitch.com

WED (#4012) 1:00 - 5:00 PM
FAIR VIEW, 2ND FLOOR

CANCELLED

4013 Serengeti Shapes Pillow

Sheila McKay • McKay Manor Musers

WED (#4013) 1:00 - 5:00 PM
EXPO HALL, VIKING

Learn the tips and tricks to sewing with soft Cuddle (Minky) fabrics as you make an adorable safari animal pillow—a lion in the shape of an octagon, a giraffe in the shape of an inverted pyramid, or a hippo in the shape of a trapezoid. You will also learn to do raw edge appliqué and to sew with shaggy Cuddle fabrics. Pillows are about 15" x 15".

\$25 kit fee. Color pattern and fabrics for one pillow

Student Supplies. Basic sewing supplies, one sheet of lightweight fusible web (Steam-A-Seam, Wonder Under, etc.), sewing scissors, paper scissors, grey or beige thread, needle, long pins with big heads or Clover Clips, 4" wide ruler, seam ripper, one bag of polyester stuffing, and a pencil



4014 Hunter's Star the Marti Way

Marti Michell • Michell Marketing, Inc.

WED (#4014) 8:00 AM - 12:00 PM
EXPO HALL, PFAFF

Hunter's Star is a popular block, but many people shy away from it because it includes diamonds! Marti has simplified the technique and created a very efficient way to cut and sew the Hunter's block.



\$5 kit fee. Rental fee for tools used in class, will apply to purchase if any items are bought

Student Supplies. Basic sewing supplies, two contrasting and complementary fat quarters (18" x 12"), matching thread

4015 Boro: From Rags to Riches

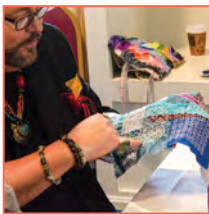
Shannon & Jason Mullett-Bowlsby •
Artisan Space / The Shibaguyz

WED (#4015) 8:00 AM - 12:00 PM
FAIR VIEW, 2ND FLOOR

We're going to use the fabric piecing principles of boro and the associated sashiko hand-sewing skills to take our own scraps of fabric and make something FAB and new! In fact, we're going to take this to the furthest extreme and create a new panel of unique fabric from seemingly unusable fabric remnants and odd pieces.

\$10 kit fee. Fabric, needles, pins, Japanese ring thimble, and Sashiko pattern templates

Student Supplies. Basic sewing supplies



4016 Improv Piecing

Shannon & Jason Mullett-Bowlsby •
Artisan Space / The Shibaguyz

WED (#4016) 1:00 - 5:00 PM
EXPO HALL, BERNINA

Throw the rules of quilting out the door and give improv piecing a try. Improv piecing uses random fabric scraps—size and shape don't matter—then sew, adding more as you go until you have a piece large enough to square up... then we put it all together into a one-of-a-kind masterpiece!

\$10 kit fee. Assorted fabrics and extensive handout

Student Supplies. Basic sewing supplies



4017 Customize Your Size for Fit

Laura Nash • Sew Chic Pattern Co.

WED (#4017W) 8:00 AM - 12:00 PM
FAIR VIEW, 1ST FLOOR

WED (#4017) 1:00 - 5:00 PM
PAULHAMUS, ROOM 3



Discover an eight-step routine that starts with key measurements and ends with customized sizing. You'll work with the basic bodice only to learn about size transitions and vital alterations, checking your work by tissue fitting in class. If desired, bring two yards of quality muslin to complete the job in fabric with pin fitting. Wear a good bra and light clothing. Moderate sewing experience recommended. Pattern bust size from 34-57.

\$20 kit fee. One basic shell pattern, 1 yard of pattern paper, tissue for fitting

Student Supplies. Mechanical pencil, highlighter, scissors, straight pins, measuring tape, magic tape, C-Thru grid ruler, thread and needle for hand basting

4018 Beginning Inkle Loom Weaving

Marilyn Romatka • Taproot Folk Arts LLC

SUN (#4018D) 8:00 AM - 2:00 PM
FAIR VIEW, 2ND FLOOR

Six (6) hour class. The Inkle loom is a charming little loom. It's a wooden frame with no moving parts, yet because of its ingenious design it makes clear weaving sheds using nothing but the awesome human hand! All manner of narrow bands can be done on the Inkle loom, from camera straps to bookmarks. Sign up early, as we have a limited number of looms to use in the class.

\$20 kit fee. Use of loom & shuttle in class, all warps and wefts, color handout

Student Supplies. Sharp sewing snips



\$75

4019 Kumihimo: Japanese Braiding

Marilyn Romatka • Taproot Folk Arts LLC

WED (#4019) 1:00 - 5:00 PM
FAIR VIEW, 1ST FLOOR

Ancient Japanese artists developed a delicate braiding technique to make cords for closing scrolls, adornment, and even for construction of samurai armor. Working on a braiding stand called a marudai, students will enjoy the calm, rhythmic motions while they produce stunning braids. Uses for these braids are endless—jewelry, garment embellishments, dog leads, and even armor construction!

\$15 kit fee. Braiding wraps, use of instructor's marudai and tama (weights) during the class, handout with directions

Student Supplies. Sharp sewing snips



4020 Couture Hand Beading on Fabric

Cindy Rowell • Wonderfil Speciality Threads

WED (#4020) 8:00 AM - 12:00 PM
PAULHAMUS, ROOM 2

Cindy calls her fabric embellishment technique “embeadery,” and you can do it, too! This hands-on couture beading class will introduce you to a variety of beginner and advanced hand beading techniques. Cindy will share her secret tips and tricks for selecting beads that can be used on fabric, and you’ll leave class with a nearly-complete beaded handbag; you just need to sew up the sides. Learn a variety of simple couture beading techniques for easy hand beading and embellishing.

\$20 kit fee. Print fabric sampler for beading, beading thread, beading needles, a variety of beads, and detailed beading instructions

Student Supplies. 8” or 10” embroidery hoop, embroidery scissors, and glasses (if needed for close work)



4021 The Art of Quilting with Memories

Cindy Rowell • Wonderfil Speciality Thread

WED (#4021) 1:00 - 5:00 PM
PAULHAMUS, ROOM 2

You can transfer your favorite photos onto fabric using your ink jet printer; no specialty software required. This class is loaded with helpful tips, creative ideas, and unique ways to preserve photos onto fabric. Cindy will also share her secrets for creating personalized custom quilt labels and methods of adding surface embellishments to create depth and dimension to your project. Students will need to send instructor a photo at least two weeks before class.

\$15 kit fee. Pre-treated fabric for photo transfer, mouse pad, all other supplies



4022 Pants for You! Personal Fit and Styling!

Kathy Ruddy • Kathy Ruddy

WED (#4022) 8:00 AM - 12:00 PM
PAULHAMUS, ROOM 1

Create the only pant pattern you’ll need for years to come. Measurements and visual keys are the foundation for creating your own custom pants pattern. Kathy will demonstrate how to correctly take measurements as you work in pairs to complete your individual measurement chart. Each student will receive a fit chart and Kathy’s analysis.

\$25 kit fee. Seam Allowance Curve Ruler, drafting pen, practice patterns and technique tutorial

Student Supplies. Basic sewing supplies, good paper scissors, Scotch tape, and four sheets of printer paper.



4023 Surface Embellishment for Fashion

Susan Skalak • Esther’s Fabrics

WED (#4023) 1:00 - 5:00 PM
FAIR VIEW, 2ND FLOOR

Couture fashion is filled with embellished garments. Make a garment a wearable piece of art by embellishing it using your technique of choice. You will learn several different techniques to make a plain garment into a sophisticated piece that will turn heads. Students will complete their own reference notebook.

\$15 kit fee. Fabrics, buttons and beads, embroidery thread, sashiko thread, silk ribbon, and needles

Student Supplies. Basic sewing supplies



4024 Create a Washington Wall Hanging

Coleen Swettman • Quality Sewing & Vacuum

WED (#4024) 1:00 - 5:00 PM
EXPO HALL, BROTHER

Make a wall hanging using machine embroidery and quilting. There will be time in class to add customized wording for cities and a heart for a favorite location—Puyallup, or elsewhere in the Evergreen State. This is a great project to use for decorating or gifts.

\$30 kit fee. All fabrics, batting, thread

Student Supplies. Basic sewing supplies



4025 Learn to Sew: Fremont Tote

Ellie Lum • Klum House Workshop

WED (#4025) 8:00 AM - 12:00 PM
EXPO HALL, BROTHER

Construct a gorgeous waxed canvas tote with leather trim and metal hardware with step-by-step instructions from bagmaking professional Ellie Lum. You’ll go step-by-step, from sewing heavy-duty fabric to securing hardware such as metal zippers, adding interior lining pockets and more. By the end of class, you’ll not only walk away with a stylish handcrafted bag, you’ll also have a repertoire of bag-making skills that will carry you to your next project.

\$100 kit fee. Exterior waxed canvas pieces, lining 12 oz. off-white natural duck canvas pieces, exterior & interior waxed canvas pockets, leather handles, leather o-ring tabs, leather cross-body strap, leather zipper pull, leather reinforcement washers, small & medium metal rivets, o-rings, Chicago screws, d-ring, 14” brass zipper (non-separating), sew-in ‘I MADE THIS / KLUM HOUSE’ label, and instruction booklet

Student Supplies. Basic sewing supplies, jeans 100 needle. Optional: 24” x 36” quilting ruler, craft clips, flowerhead pins, edge stitch presser foot



SHOWPLEX Stage

45 minutes

FREE

Fun with Decorative Stitches — Start Using Them Again!

Kandi Christian • *Sew Timeless*

THU 3:30 PM, SAT 2:30 PM

Explore using decorative stitches, including elongated, shortened, repeated, with color changes and using different needles. See what a difference color makes with the exact same stitch. Learn how to match up rows the easy way and make sure the stitches align perfectly every time.

Fashion Forward Quilted Jackets

Rae Cumbie • *Fit for Art Patterns*

FRI 9:30 AM

If you can quilt, you can create a quilted jacket that fits well and looks great. Learn how to gather great materials, plan your designs, work modularly, and build well-fitting quilted jackets. Enjoy a trunk show illustrating the best battings, two-way lining, reversible construction, whole cloth, and pieced sections. Be inspired to create fashionable and cozy jackets for all seasons.

Wow! Wearable Art Jackets

Rae Cumbie • *Fit for Art Patterns*

SUN 8:30 AM

Artful clothing goes everywhere, so why not stitch up our own original masterpieces? Explore surface design techniques that help you envision your unique wearable art style. Fabric collage, painting, stenciling, piecing and quilting will all be considered. Gather practical tips about the structure and fit of art garments built to wear for years.

Sew Read!

Michele Drovdahl • *King County Library*

SAT 1:30 PM

Do you love sewing, knitting, other textile crafts, and reading? Join King County Librarian Michele Drovdahl to discover fiction books with a textile theme.

American Sewing Guild Fashion Show

SAT 11:30 AM

Come and see what members of the American Sewing Guild have been sewing this year.

What Kind of Embroidery Software Do I Need?

Floriani Certified Educator

THU 1:30 PM

Learn to navigate the confusing world of embroidery software. Using Floriani Software programs, we will take you through various software features to help you decide which program is right for you.

Creating a Stable Environment for YOUR Embroidery

Floriani Certified Educator

SAT 9:30 AM

Your embroidery machine and designs don't guarantee beautiful embroidery. You must begin with proper stabilization. Learn all about stabilizers, including what type to use for different projects and how much to use. Learn pro tips and tricks, and change the way you embroider forever.

Perfect Quilting Results Are NO Accident

Floriani Certified Educator

FRI 12:30 PM

We have all dedicated hours of our time and hard-earned money only to be disappointed with our quilting projects. Just a few secret ingredients can make anyone's quilting hobby more enjoyable!

Pattern Preservation: Trace Like a Boss

Keli Faw • *Drygoods Design*

THU 10:30 AM, SAT 4:30 PM

With more independent patterns and books laying out multiple versions of patterns, cutting your master no longer saves time and money. In this free demo, you'll see tricks and tools to save your master pattern and create useable, traced versions that will stand up to wear and tear.

Design & Style Your Contemporary Kimono

Annette Millard • *Social Media Lounge*

FRI/SUN 10:30 AM

Humble yet classic, the contemporary kimono is a rising star in fashion. From everyday wear to evening glam, easy-to-sew kimonos can be styled for your shape and size with fabulous results. It's the perfect canvas for beautiful fabrics and embellished designs.

Find these presentations in the One Needle class grids (pages 2 - 5)

Secrets to Look Slimmer

Kathy Ruddy • *kathyruddy.com*

SUN 12:30 PM

Lose ten pounds by choosing the right style and fit. Sew a high-end wardrobe that fits, is comfortable, and will camouflage weak points. Kathy will model a variety of styles that will work for you, too!

Sewing Tools for Comfortable Clothes

Kathy Ruddy • *kathyruddy.com*

THU 11:30 AM, SAT 3:30 PM

Learn how Kathy's techniques and favorite notions can make your creative process fun and successful! Watch Kathy model her wardrobe and show you when and where she used her favorite sewing tools to create them.

Create Enchanting Fabric with Washable Tsukineko Inks

Joyce Teng • *TSC Designs*

THU 2:30 PM, FRI 1:30 PM

Learn fun and colorful ways to create unique mixed media art that will transform your exclusive wearables, art quilts and traditional piecing. Joyce will show you how to use Tsukineko inks on various mediums to create custom pieces that pop.

ByAnnie Bag Making Basics

Annie Unrein • *ByAnnie.com LLC*

THU 12:30 PM, SAT 10:30 AM

Learn secrets to making beautiful, durable bags with designer touches and professional construction from bagmaking expert Annie Unrein. You'll see a variety of projects and learn techniques to make bag construction easier and more enjoyable with professional results.

Recycle, Repurpose and Create New 18" Doll Clothes

Nadeen Ward • *Dolls R SEW Fun*

FRI 3:30 PM, SUN 11:30 AM

What to do with your wonderful heirloom linens? Even a threadbare pillowcase can make an exquisite dolly dress. Nadeen will show you how to make one-of-a-kind doll clothes from these special keepsakes, plus how to document their history.

Accuquilt

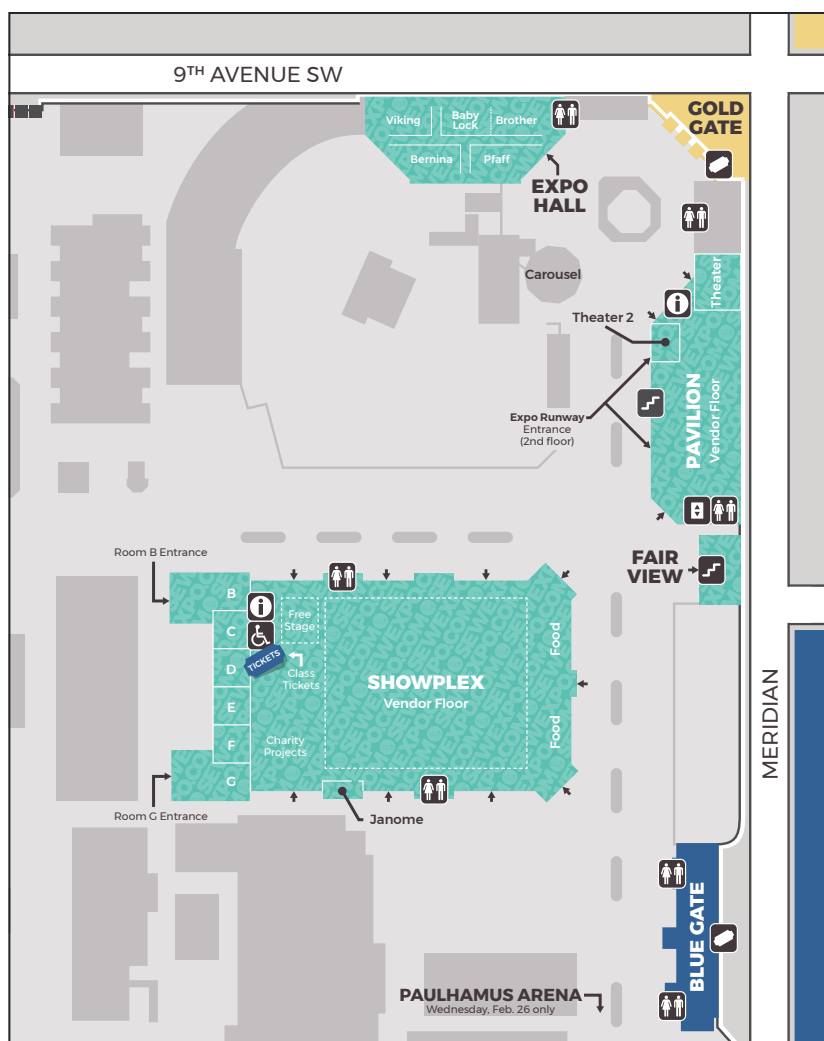
Quality Sewing & Vacuum instructor

THU 9:30 AM, SAT 8:30 AM

Expo Vendors

1 Source Publications, Inc
A1 Quilting Machines, Inc
American Sewing Guild
Apple Yarns
Aria Design Studio /
Lisa Kan Designs
Avery Lane Designs
Baby Lock
Bear Paw Quilts
Bee Unique Designs
Billie's Designer Fabrics
BlackCat Vintage Sewing
Bluefig
Bo-Nash (North America) Inc
Boersma's /
Innova Quilting Systems
Bonnie Sewell Designs
Brie Kriebel Clothing
Buttons!
ByAnnie.com LLC
Calico Country
Carol's Zoo
Carriage Country Quilts
Cathy's Creations, home of
the Ugly thimble
Chambray Blues Sewing
Charisma Horton
Classy American Quilt
Design Walls
Clover Needlecraft
Cluck Cluck Sew LLC
Cochennille Design Studio
Compass Moon Creations
Copper Mountain Quilting
The Cotton Cure
CraftOptics
Creative Feet
Cutting Line Designs
Dana Marie Design Co. /
Saf-T-Pockets
The Decorating Diva
Desiree's Designs
DittoForm Michigan LLC
Dolls R SEW Fun
Drygoods Design
Dutch Quilter
Edmar Company
Esther's Fabrics
EU Textiles LLC
Evergreen Ch., Embroiderers'
Guild of America, Inc.
The Fabric Fix
Fabric Studio/easyFab
Design Studio
Fancy Image Yarn
Feather Your Nest Quilt Store
Fibers Etc
Fine French Laces
Fit for Art Patterns
FitNice, LLC
Flair Designs
Fly Designs Yarn
French European Inc
G & P Trading
Gammill Northwest
Glitz And Glamour
Great Yarns!

Hancy Creations, Inc. /
FullLineStencil.com
Hannah's Quilts and Crafts
Heartway Int'l / ThePatpourri
Hirsch Solutions, Inc
i-bead.com / i-stitch.com
Indonesian Batiks
Island Quilter
Janome and Elna
Jody Houghton Designs
John Deer's Embroidery Legacy
Just Sew Vintage
KAI Scissors
Kali Basi Designs
Karen's Crystals
Kathy Quilts!
Kathyruddy.com
Keepsake Quilting
Koala
L'Etoffe Fabrics /
Center For Pattern Design
Lorraine Henry /
The Two Easy Tape Co.
Maendeleo Imports
Makers' Mercantile
Marbled Arts
Marcia Derse Fabrics
Martelli Enterprises
McKay Manor Musers
Measurematic, Inc.
Michell Marketing /
From Marti Michell
Momodini Embroidery Art
Mosaic Quilt Studio
Nancy Nix-Rice
Wardrobe Consulting
Not Just Quiltz
Off The Wall Quilt, LLC
Oliso
Olympic Wool Works
One Sister LLC
Pacific Fabrics
Pamela's Patterns /
Palmer/Pletsch
Paradiso Designs
Pauline Rogers
Pendleton Woolen Mills
PerfectBorders.com
The Pine Needle
Retreat Adventures
Pineapple Fabrics
Precision Quilting Tools
PreCuts Quilt Shop And Craft
Professional Sewing Supplies
Project Lydia
Purse Making Supply
Quality Sewing & Vacuum
The Quilt Barn
Quilt Gallery
The Quilt House, Inc.
Quilt n Cross
The Quilt Nest & Yarn Boutique
The Quilt Shoppe Poulsbo
The Quilted Trillium
Quilters Cove
Quilts In The Attic
Redline Embroidery Machines



Renaissance Flowers
Rochelle's Fine Fabric.com
Ruby's
Sassafras Lane Designs
Sew Chic Pattern Co.
Sew Kind of Wonderful
Sew Powerful
Sew Timeless
Sew Very Smooth
Sew Wonderful Dreams
SewBatik
Sewing and Design School/
Anne Whalley
Sewing Machine Service /
BERNINA of Renton
Sheridan Art & Designs
Shibori Dragon

Sisters Quilt Shop
So Sew English Fabrics
The Sojourn Collection
Starr Design Fabrics
StashAddict Quilts
Stitch Collective
Stitches in Time Antiques
The Stitchin' Post
Storable Bliss
Style Maker Fabrics
Sue's Sparklers Stencils
& Laser-Cuts
Superior Threads
Taproot Folk Arts, LLC
TheZipperLady.com
Thimbles For You
Thread Cutterz

Trims on Wheels
TSC Designs
Unique Sewing Furniture
Uniquely Crafts LLC
Vogue Fabrics
Whims Watercolor Quilt Kits
Winline Textiles
WonderFil Specialty Threads
The Wool Club House
The Wool House
Woolpets
Wooly Felted Wonders
Yarn and Ewe
Yazzii
Yesterdays Charm
Your Perfect Quilting Space

Sewing & Stitchery e.x.p.o

Washington State University
Professional Education
2606 West Pioneer
Puyallup, WA 98371-4998

Join Us!
February 27 –
March 1, 2020

**Washington State Fair
& Event Center**

110 Ninth Avenue Southwest
Puyallup, Washington 98371

Tickets & Information
866-554-8559
www.sewexpo.com

Online Sales Begin
January 8, 2020

Online Sales Begin
January 8, 2020

SEWING & STITCHERY EXPO

Registration

Class Prices

One Needle (45 min) \$6
Two Needle (90 min) \$20

Three Needle (2.5 hrs) \$30
Four Needle (4 hrs) \$50

Indicate your class choices below using the four (4) digit ID number listed in the class description. For classes with more than one session, be sure you indicate your preferred time. Please list one alternate choice. **DO NOT WRITE IN SHADED BOXES.**

One Needle Classes†

TIME	THURSDAY	FRIDAY	SATURDAY	SUNDAY
8:30 am				
9:30 am				
10:30 am				
11:30 am				
12:30 pm				
1:30 pm				
2:30 pm				
3:30 pm				
4:30 pm				
ALT. #1				

_____ OF CLASSES × \$6 = \$

Two Needle Classes†

TIME	THURSDAY	FRIDAY	SATURDAY	SUNDAY
8:30 am				
10:30 am				
12:30 pm				
2:30 pm				
ALT. #1				

_____ OF CLASSES × \$20 = \$

If necessary, my class may be changed or rearranged to accommodate my first choices:

☐ No ☐ Yes, with the following restrictions: _____

† **One, Two, and Three Needle Classes** require the purchase of a daily admission ticket for access to the show grounds in addition to the class fee. Certain classes will also have a separate kit fee listed with the class description, which is payable to the instructor at the beginning of the class. **Four Needle Classes** held on Wednesday only do not require purchase of a daily admission ticket (vendor floors are not open Wednesday).

‡ **VIP Experience packages** include admission and VIP seating for one (1) individual to that day's evening entertainment.

Three Needle Classes‡

TIME	THURSDAY	FRIDAY	SATURDAY	SUNDAY
8:00 am				
11:00 am				
2:00 pm				
ALT. #1				

_____ OF CLASSES × \$30 = \$

Four Needle Classes‡

TIME	WEDNESDAY	SUNDAY
8:00 am		
1:00 pm		

**WEDNESDAY
CLASSES ONLY
NO DAILY ADMISSION
REQUIRED.**

_____ OF CLASSES × \$50 = \$

_____ OF CLASSES × \$75 = \$

General Daily Admission

_____ DAILY ADMISSIONS × \$12 \$

Includes single day admission to vendor floor, style shows, and demo areas (Thursday through Sunday). Classes sold separately.

_____ FOUR DAY PASSES × \$42 \$

One Needle Classes _____ × \$ 6

Two Needle Classes _____ × \$ 20

Three Needle Classes _____ × \$ 30

Four Needle Classes _____ × \$ 50

Four Needle Classes _____ × \$ 75

FRI! FRIDAY NIGHT LIVE! _____ × \$ 25

OR **FNL! VIP Experience**** _____ × \$100

SAT! QUILTER'S NIGHT OUT! _____ × \$ 25

OR **QNO! VIP Experience**** _____ × \$100

Processing & Handling \$ +4.00

Total Due (Grand total of lines above) \$

Payment by:

Credit Card ☐

Check ☐

OFFICE USE ONLY

I	W	T	F	SA	SU	CK	Mailed

Online Sales Begin
January 8, 2020

SEWING & STITCHERY EXPO

Registration

Mail this form to:

Sewing & Stitchery Expo
PO Box 11243
Tacoma, WA 98411-0243

All orders add \$4.00 handling.
Orders postmarked after
Feb.10, 2020 **will be returned.**

Ticket Orders

- Use this form, download additional forms at www.sewexpo.com, or **register online**. Photocopied forms are also acceptable.
- A general admission ticket is required to attend Expo each day (\$12 in advance or \$14 at the gate). Children 10 and under are free. Tickets may be purchased at select retail stores (see list at www.sewexpo.com).
- Please include two alternate class choices for each day. Every attempt will be made to accommodate your first choice(s).
- No refunds will be made for lost, forgotten, unused or stolen tickets. A **\$2 fee** will be charged for each ticket replacement.
- **It may take up to three (3) weeks to process your tickets.**

Ticketing Outlets

On sale now! Admission tickets may be purchased at selected fabric stores. For the most up-to-late list of stores, visit www.sewexpo.com.

ADA Information

Persons with disabilities who need assistance should call the Sewing & Stitchery Expo at **866-554-8559** as soon as possible. Requests must be received at least two (2) weeks prior to show.

Need wheelchair or mobility scooter rental? Contact Wheelchair Haven (www.wheelchairhaven.com or **253-926-8971**) to reserve your device; rental is not available at Expo.

Hotel Information

For information on area hotels, call the Puyallup Chamber of Commerce (**253-845-6755**) or Travel Tacoma + Pierce County (**800-272-2662**). For a list of local hotels visit www.sewexpo.com or www.traveltacoma.com.

RV Parking

RV parking is available at the Washington State Fair. Call **253-845-1771** for more information.

Personal Information

Please print clearly. Orders mailed separately cannot be coordinated.

Name: _____
FIRST LAST MI

Address: _____

City: _____

State/Province: _____ ZIP: _____ Country: _____

New Address? ☐ Yes ☐ No New E-mail? ☐ Yes ☐ No

Daytime / Mobile Phone: _____

E-mail: _____

ADA Accommodation

I require accommodation under the ADA.

☐ Visual/hearing ☐ ASL interpreter ☐ Mobility/seating assistance ☐ Other

Please explain how we may assist you:*

**If additional space is required, please attach a note.*

Payment Information

DO NOT SEND CASH!

☐ Check No. _____ Amount \$ _____ .00

Make checks payable to: **Washington State University**

☐ Credit/Debit Card (*preferred*)

☐ Visa ☐ Mastercard ☐ Discover ☐ Debit

Card Number: _____ - _____ - _____

Expiration Date: _____ / _____ Security Code: _____

Name on card: _____